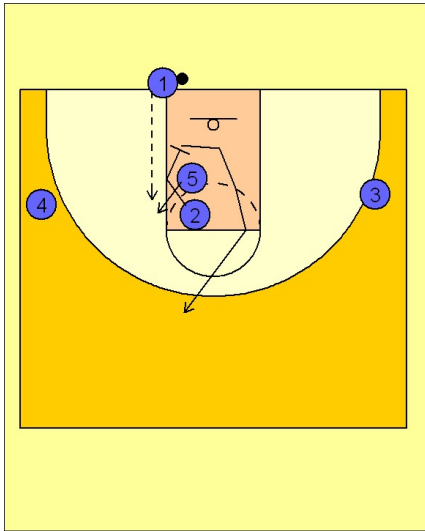


# Missouri

## Ob under vs. zone (1)

1



Missouri OB Under vs. Zone

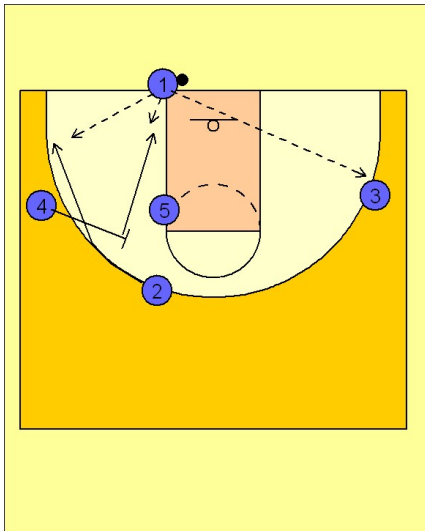
#3 and #4 are spread out wide.

#2 and #5 are stacked in the middle, near the mid-FT line area.

#2 comes over the top of #5 and sets a screen on the middle defender.  
#5 moves to the open area in the middle for an entry pass from #1.

After #2 screens, he breaks to the top of the key area.

2



Missouri OB Under vs. Zone

If that is not available, #4 sets a screen for #2 to come to the ball side wing area for a shot. Depending on how the defenders react to the screen, #4 may have an open area to break to the basket for the shot.

Also, with the action inside, the wing defenders may have to help, allowing a skip pass to the opposite wing man, #3 in this diagram.