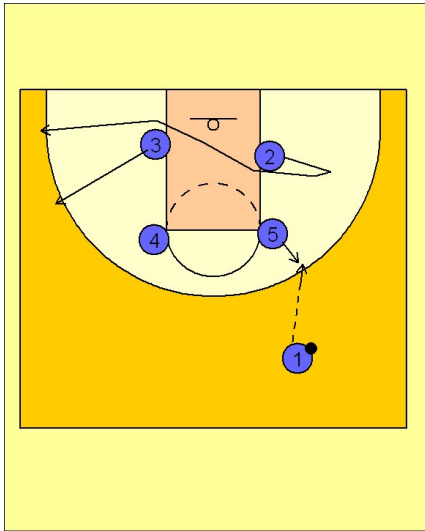


Missouri

Quick hitter vs. man (2)

1



Missouri Quick Hitter vs. Man Defense

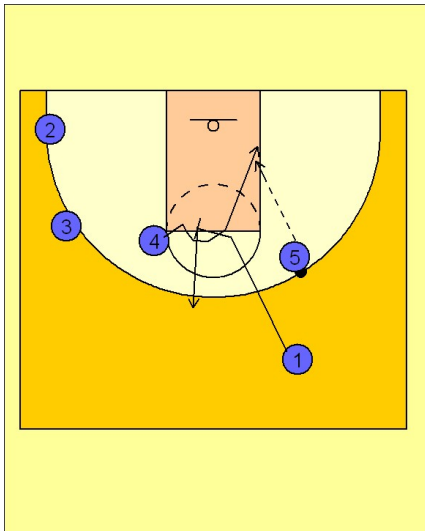
Box set to begin.

#5 steps out and receives the entry pass from #1.

The low block perimeter player on the ball side, #2, clears out to the corner away from the ball.

#3, the opposite low block perimeter player, breaks out to the wing away from the ball.

2

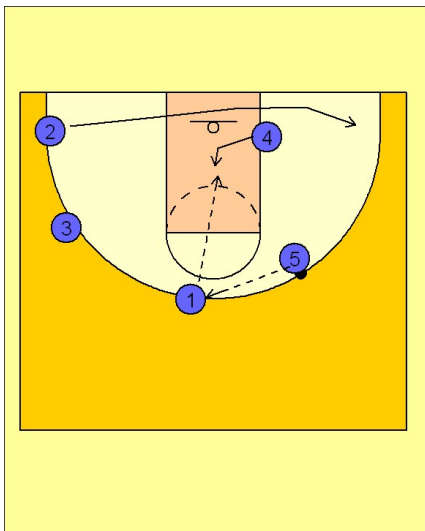


Missouri Quick Hitter vs. Man Defense

Once #2 clears out, #1 follows into the FT line area and sets a screen for #4. #4 curls over the top of the screen looking for the ball on the ball side low block and the post entry pass from #5.

#1 pops out after screening.

3



Missouri Quick Hitter vs. Man Defense

#5 passes to #1 on top if #4 was not open coming off the screen.

#1 can look inside to #4 ducking into the post. #2 will return to the right side of the floor for balance and to begin their motion offense.