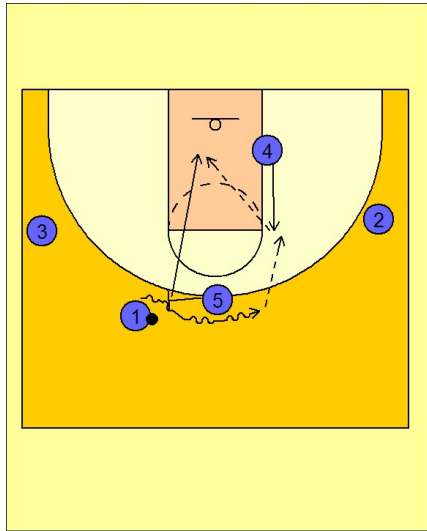


Missouri

Quick hitter vs. man (5)

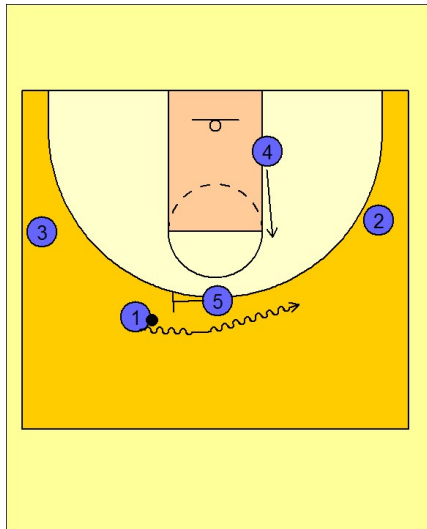


1

Missouri Quick Hitter vs. Man Defense

#5 screens on top for #1. As #1 is coming over the top of the ball screen, #4 is flashing to the right ft line elbow. #1 will look to enter the ball to #4 who will then look to #5 rolling to the basket after the ball screen.

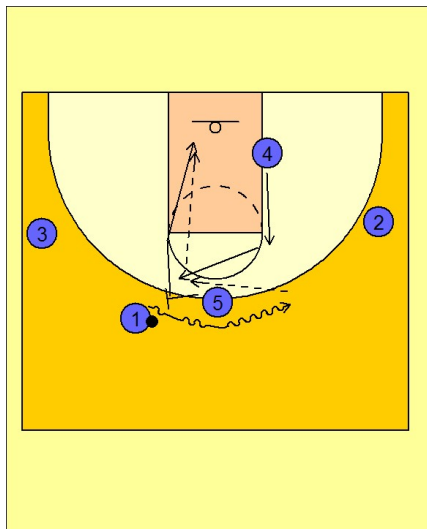
This is an effective quick hitting play as #5's defender is usually taught to jump out and "hedge" the ball screen with #1. This will give #5 a slight lead on his defender rolling to the basket.



2

Missouri Quick Hitter vs. Man Defense

Missouri will also look at another option if #1 continues his dribble across the top and does not enter the ball to #4 at the ft line right elbow.



3

Missouri Quick Hitter vs. Man Defense

#4 will step out opposite #1 on top looking to receive the ball reversal pass. #5 had already rolled to the basket when #1 drove over the top of the ball screen.

#4 will then look to enter the ball to #5 inside.