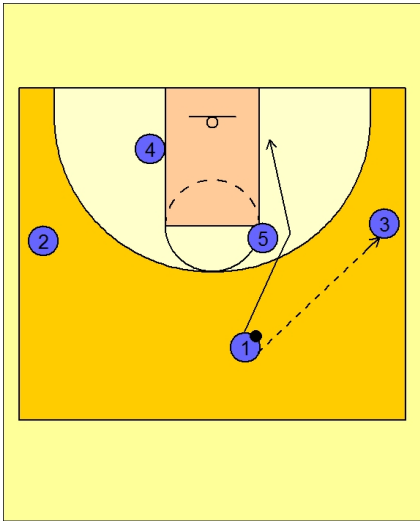


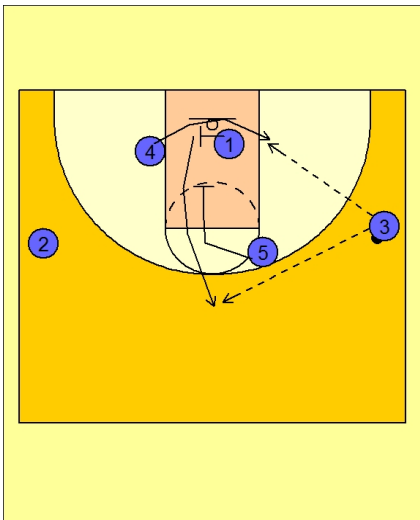


## Set play vs. man (10)



### Missouri Set Play vs. Man Defense

#1 passes to #3 on the right wing. #1 cuts to the ball side low block.

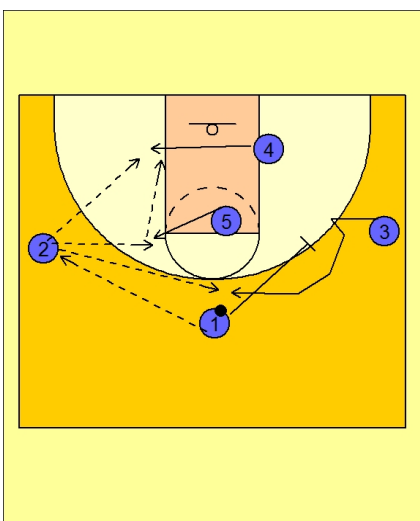


### Missouri Set Play vs. Man Defense

#1 now screens across for #4. #4 cuts to the low ball side low block looking for the pass from #3.

#5 "picks the picker" and screens down for #1.

#3 looks to hit #4 or #1 coming up on top for the open jumper.



### Missouri Set Play vs. Man Defense

If #1 does not have the shot, he will reverse the ball to #2 on the left wing and screen away for #3.

#4 and #5 will flash to the ball side low and high post.

#2 looks to hit the open player.