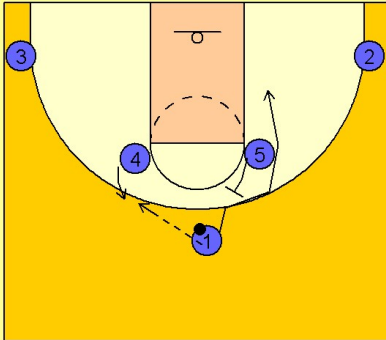


# Missouri

## Set play vs. man (7)

1

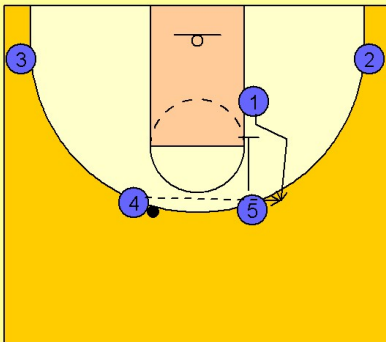
Missouri Set Play vs. Man Defense



#4 steps out to receive the entry pass. #5 back screens for #1. #1 cuts about half way down the lane and then stops.

2

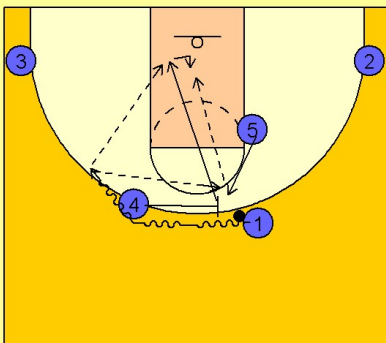
Missouri Set Play vs. Man Defense



#1 turns around and breaks back up to the top off of a screen from #5. #4 enters to #1 on top.

3

Missouri Set Play vs. Man Defense



As soon as #4 passes to #1 he moves toward the ball to set a ballscreen. #1 comes over the top of the ball screen and looks to hit #4 rolling in the lane. #5 steps to the top as a high / low passing option should #4 be fronted in the post. #1 would then quickly reverse the ball back to #5 stepping out on top and #5 would feed #4 inside.