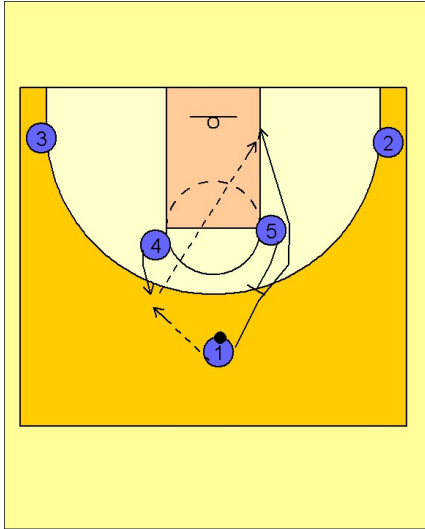


Missouri

Set play vs. man (8)

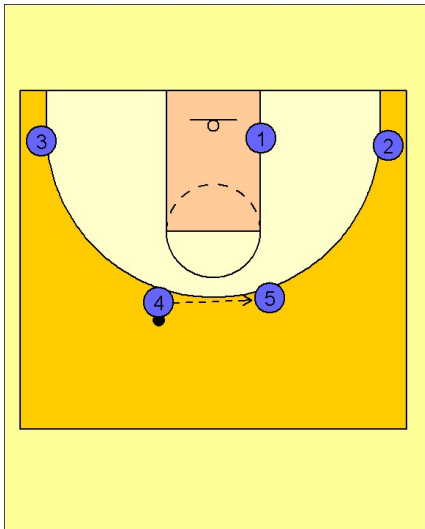
1



Missouri Set Play vs. Man Defense

#4 steps out and receives the entry pass from #1. #5 sets a backscreen for #1 who cuts toward the basket. #4 will look to make the pass if #1 is open.

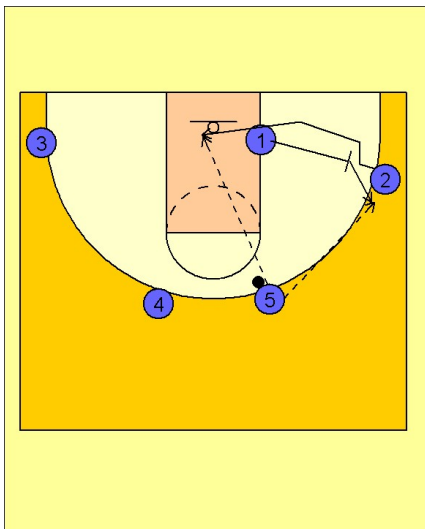
2



Missouri Set Play vs. Man Defense

#4 passes across to #5 on top.

3



Missouri Set Play vs. Man Defense

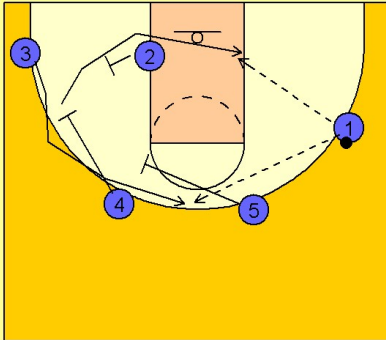
As #5 receives the ball, #1 steps out and backscreens for #2 on the right wing. #5 will look inside to #2 cutting or pass to the right wing player #1, who has stepped out after screening.

Missouri

Set play vs. man (8)

4

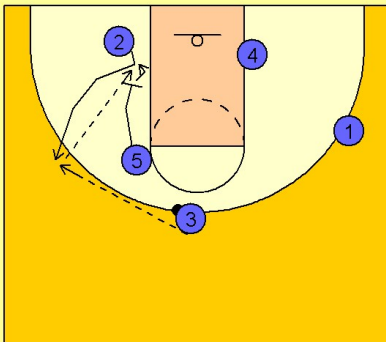
Missouri Set Play vs. Man Defense



Once #1 has the ball, #4 and #5 set a double staggered screen for #3 on the left wing. As #3 comes off of #4's screen, #4 will cut underneath the basket off a screen from #2. #1 will look to hit #4 in the post or #3 on top for the open jumper.

5

Missouri Set Play vs. Man Defense



If #3 receives the pass, #5 will continue his screening direction and set a down screen for #2 on the left low block area.