

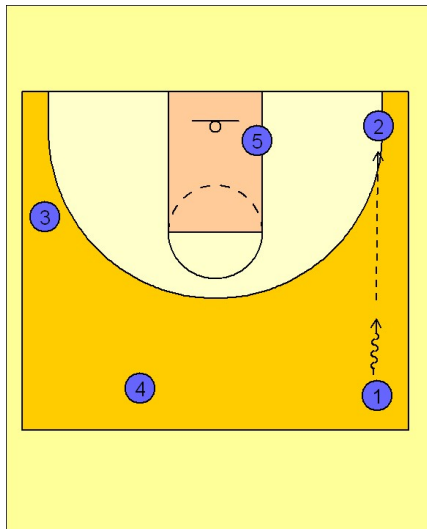
Michigan state

Early offense (2)

1

Michigan State Early Offense

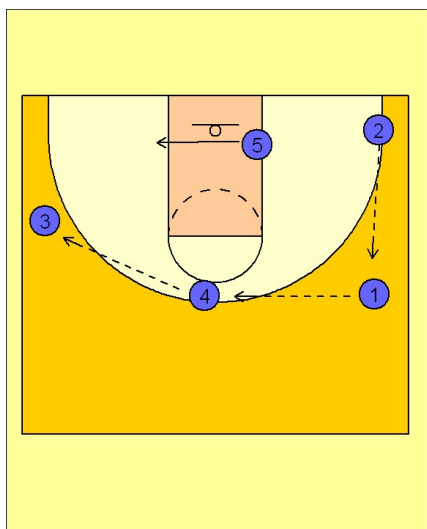
The Spartans like to push the ball up the sideline and flatten the defense by sending the ball ahead to the (#2 and #3) man if he is open.



2

Michigan State Early Offense

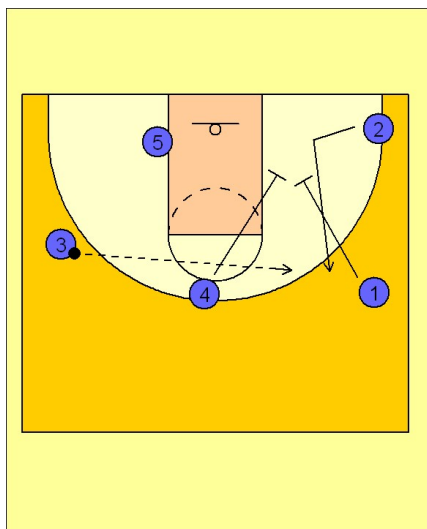
(#2) will then reverse the ball to the point guard (#1) who reverses it to (#4) and then (#3). The (#5) man slides across the lane looking for the post up.



3

Michigan State Early Offense

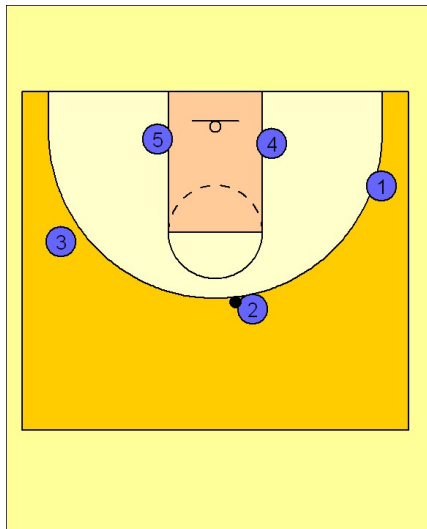
After ball reversal, (#4) and (#1) set a double screen for the (#2) man for the jump shot.



Michigan state

Early offense (2)

4



Michigan State Early Offense

(#4) man relocates to the block opposite the (#5) man while (#1), (#2) and (#3) space out on the perimeter and begin their 3 out 2 in motion offense.