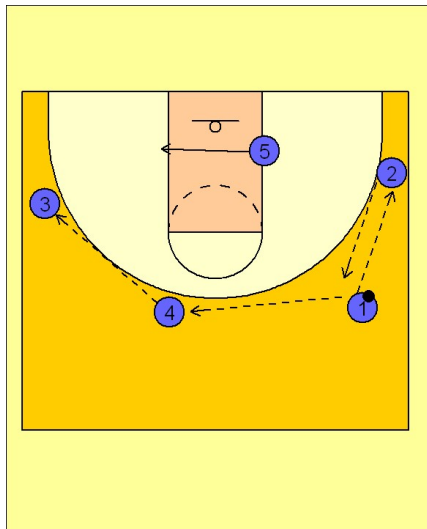


Michigan state

Early offense (4)

1

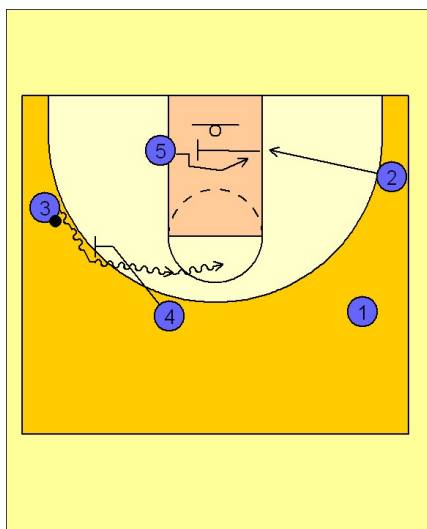


Michigan State Early Offense

#1 enters the ball in transition to #2 on the wing. #2 reverses the ball back to #1 who swings it around to #4 who passes it to #3 on the opposite wing.

#5 follows the ball across the lane looking for the post up.

2

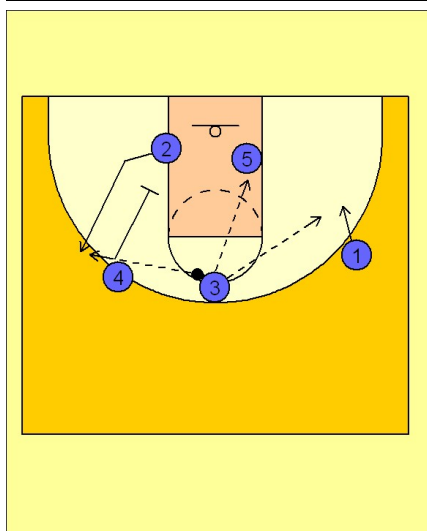


Michigan State Early Offense

After #3 has the ball, #4 sets a ball screen on the wing. #2 slides down to the block. As #3 comes off the ball screen set by #4, #2 is setting a cross screen for #5.

Whenever a small guard is setting a screen for a big post player, one of your hopes is that you can force a switch on the screen and force the smaller player to defend #5 inside.

3



Michigan State Early Offense

#1 spots up on the wing looking for a kick out from the driving #3. #4 sets a down screen for #2 who has just set the pick on #5. #3 can look to hit #2 for the jumper coming off the down screen.