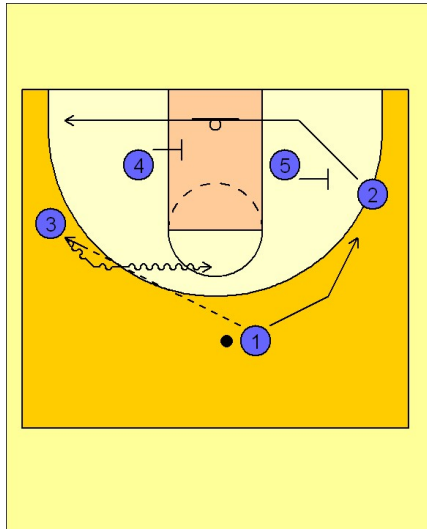


Michigan state

Half court offense (2)

1



Michigan State Half Court Offense

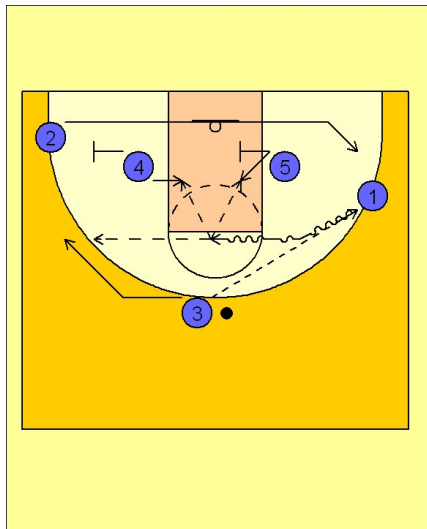
3 out 2 alignment to begin. MSU calls this "circles" we believe and may be run vs. man and zone defense.

A fairly simple continuity offense to remember. The offense is keyed off the dribble penetration from the perimeter, more specifically, the wing position.

Here we see #1 entering to either wing. Once the wing player has the ball his options are simple, either drive baseline or drive to the middle of the floor. Usually, especially early in the offense, they will take the ball to the middle of the floor.

When #3 takes the ball towards the middle, #1 fades to the right wing area while #2 cuts under the basket using block screens from #5 and #4.

2



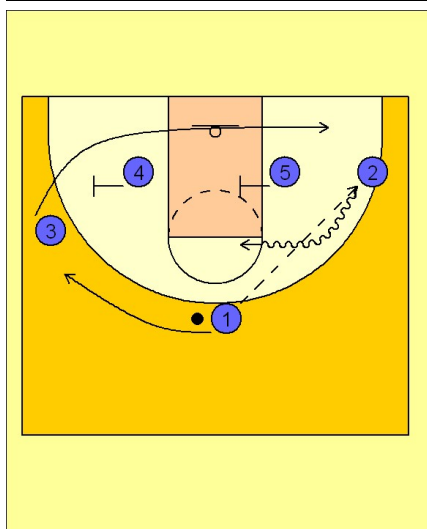
Michigan State Half Court Offense

#3 will drive the gap at the FT line elbow. If he doesn't have a shot he bounces out with the dribble to the top of the key area. He then makes a decision to pass to either #1 on the right wing or #2 on the left wing.

Here we see that he has passed to #1 on the right wing. Just like in the beginning, when the wing player receives the ball, #1, he drives towards the middle of the floor (or baseline if available).

Again, #3 fades to the opposite wing while #2 cuts across the baseline and out to the other wing replacing the spot #1 just vacated.

3



Michigan State Half Court Offense

Should #1 not have a scoring opportunity or a pass inside to either #4 or #5 sealing for post position after screening, he will bounce out and hit either wing player again.

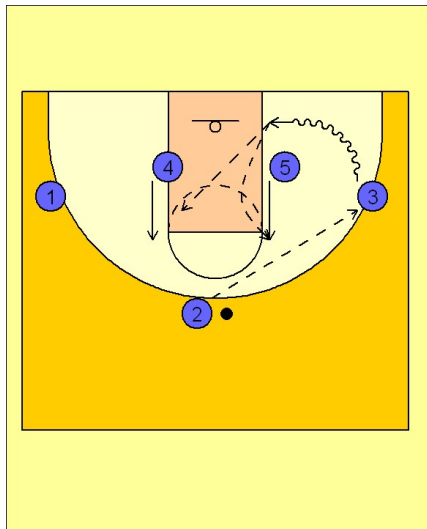
Here #2 gets it on the right wing and takes the ball to the middle. The rotation continues with #1 sliding over to the back side wing and #3 cutting under the basket out to the other wing.

Michigan state

Half court offense (2)

4

Michigan State Half Court Offense



Anytime the wing player takes the ball to the basket on the baseline, both post players #4 and #5 step out looking for a pass from the driving player #3. When the defense collapses on penetration #4 and #5 could be open in the gaps when the defense sinks.