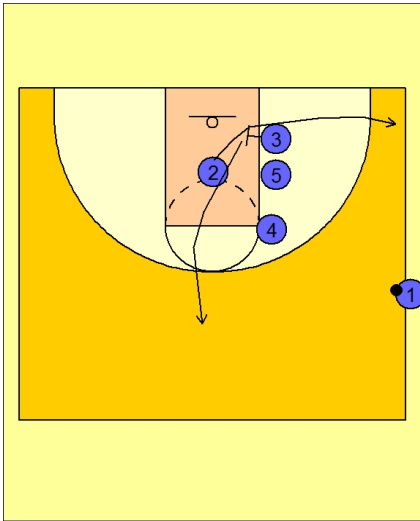


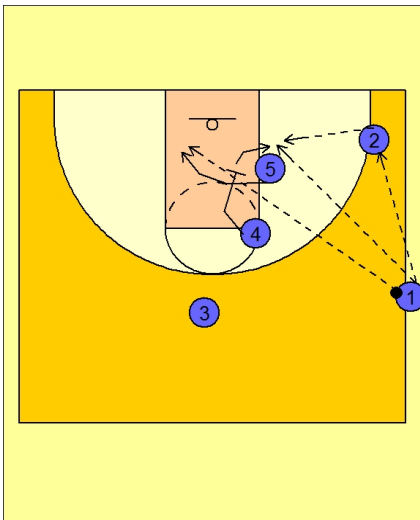


Ob side out (5)



Michigan State Ob Side Out vs. Man

Play starts with #2 cutting off the low screen in the stack from #3 and out to the ball side corner. #3 cuts to the top as #2 cuts off the screen.



Michigan State Ob Side Out vs. Man

As soon as #2 cut off the double, #3 is cutting up to the top and then #4 is screening down in the lane on #5's defender.

#5 cuts behind the screen and to the backside of the rim looking for the lob pass from #1.

#4, after screening for #5, posts up on the block.