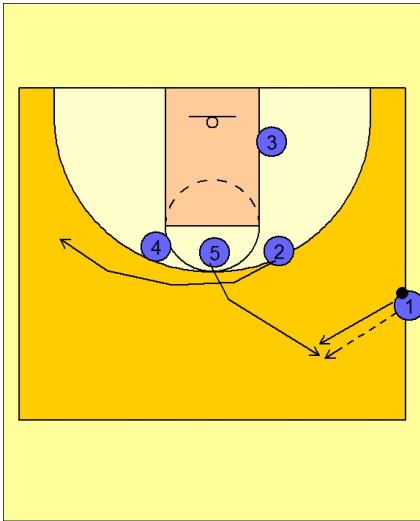


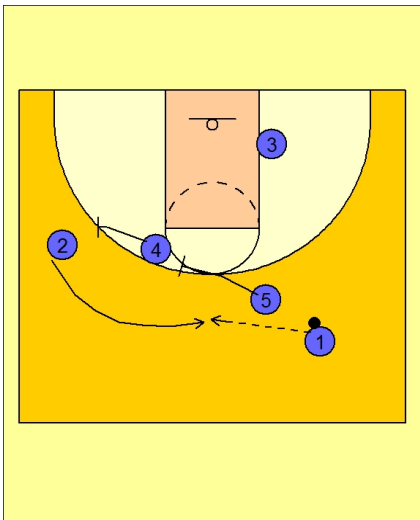


Ob side out (6)



Michigan State Ob Side Out vs. Man

#2 starts the play by cutting to the back side of the floor while #5 cuts after #2 and comes toward the ball to receive the inbounds pass from #1.



Michigan State Ob Side Out vs. Man

#5 gives the ball back to #1 and then sets a double screen away for #2, looking to free him for an open jump shot or peneration opportunity.