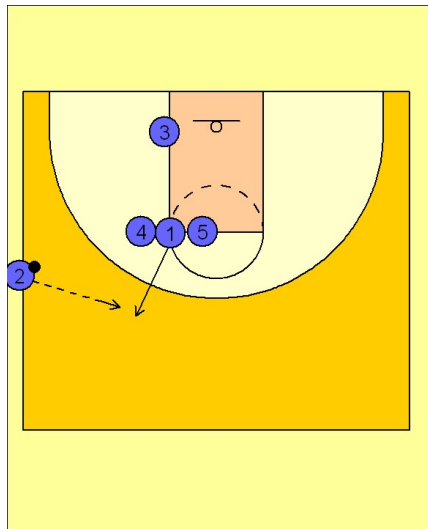


Michigan state

Ob side out (1)

1

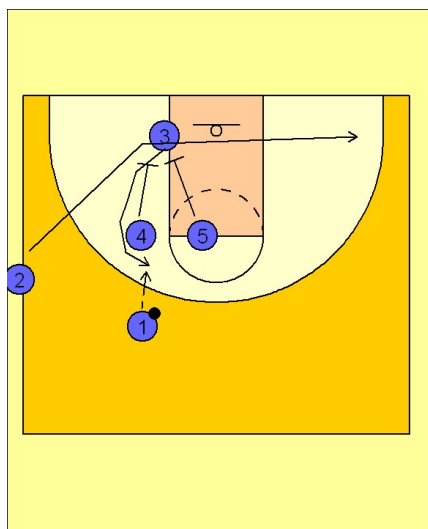


Michigan State OB Side Out

As a quick hitter, if (#3) is being fronted you may want to through a lob pass to the rim, since there is no weakside help. Be careful - this is not an easy pass.

(#1) breaks out to receive inbounds pass.

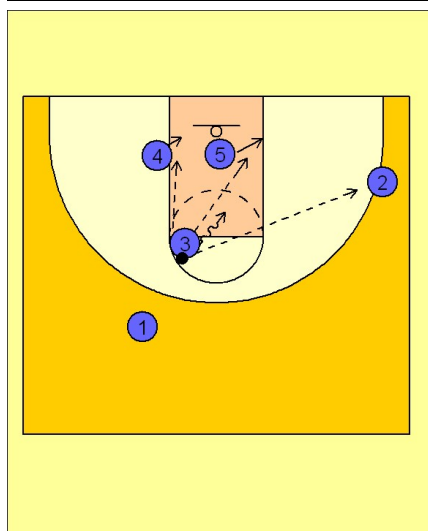
2



Michigan State OB Side Out

After inboundng the ball to (#1), (#2) clears across the lane quickly. As this happens, (#4 and #5) set a double down screen for the (#3) man.

3



Michigan State OB Side Out

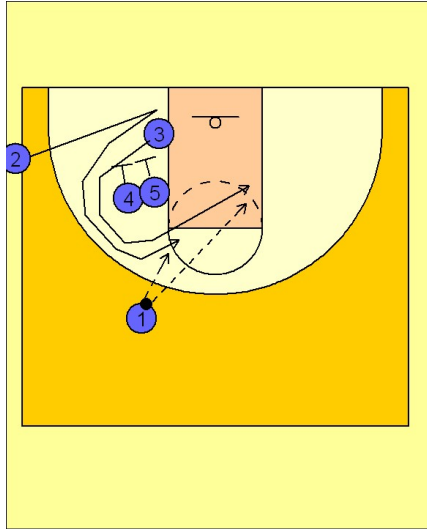
Once (#3) catches it in the high post, he has the option to dump it down into (#4 or #5), skip it to (#2), or drive it to the basket himself, hoping that one of the post player's defenders will help up on the drive, opening up a pass into the post.

Michigan state

Ob side out (1)

4

Michigan State OB Side Out



Another option on this play would be for (#3) to come off the double as usual, but now (#2), instead of cutting through, fakes across and comes off the double screen moments after (#3) came off of the double from (#4 and #5).