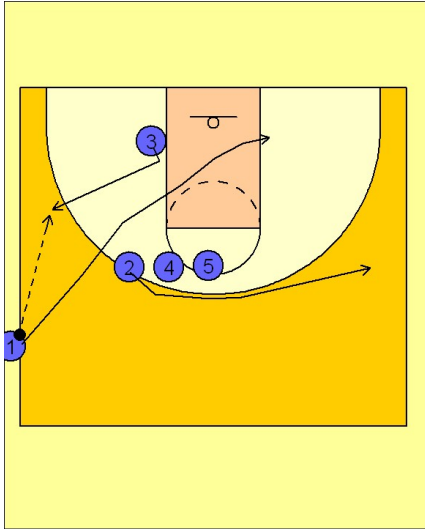


# Michigan state Ob side out (2)

1



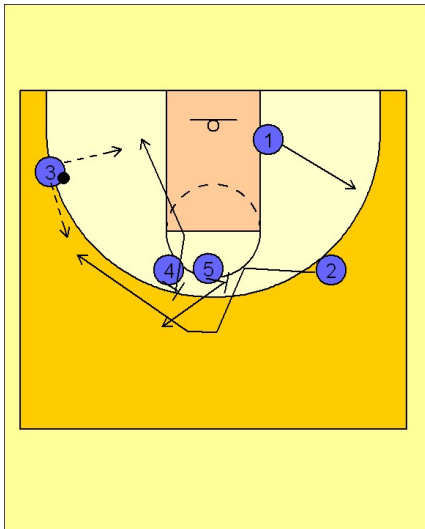
Michigan State OB Side Out

(#2) breaks off the stack to the opposite side of the floor wing area.

(#3) v-cuts and breaks to the ball side wing for the entry pass.

(#1) clears out to the opposite low block after entering the ball to (#3).

2



Michigan State OB Side Out

Once (#3) receives the ball, (#4) and (#5) turn around and set a double screen for (#2) coming back to the ball for a jump shot or curl for a lay-up.

(#4) breaks to the basket and (#5) pops out after (#2) comes off the screen.

(#1) breaks out to the wing area.