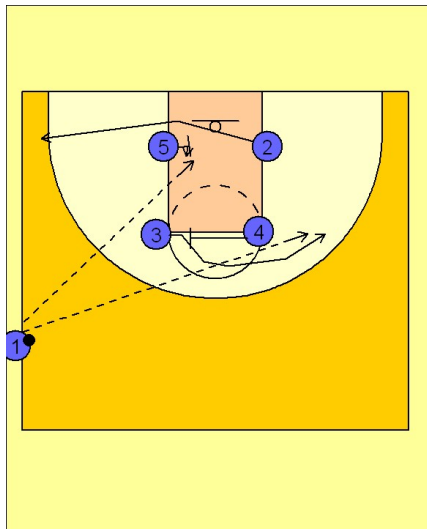


Michigan state Ob side out (4)

1



Michigan State Ob Side Out vs. Man

This is a quick hitting play. #4 back screens for #3 who breaks to the opposite side of the floor.

#5 sets a screen for #2 breaking out to the ball side corner area.

This action creates a diversion and also brings the weakside defenders away from the basket. The quick hitting play occurs when the inbounder #1 passes to the rim for #5. #2 has cleared out the weakside defender by cutting to the ball side corner.

#1 can also skip the ball to the back side player #3.