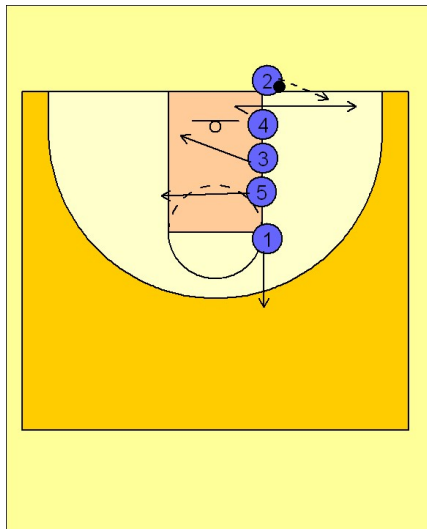


Michigan state

Ob under (2)

1



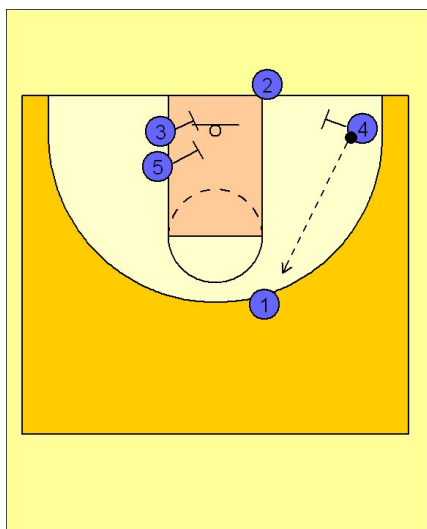
Michigan State OB Under

(#4) fakes inside and breaks to the wing. If the defender is overplaying him to the wing he can continue his fake cut inside and take the layup pass.

(#5 and #3) break to the other side to begin setting up their double screen.

(#1) breaks out for a potential inbound pass if (#2) cannot inbound it to (#4)

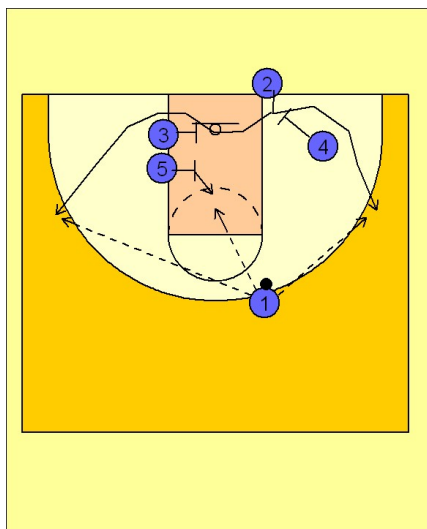
2



Michigan State OB Under

(#4) reverses the ball to (#1) at the top. (#5 and #3) set up their double screen on the left side while (#4) gets ready to set a down screen for (#2) coming inbound.

3



Michigan State OB Under

(#2) then has the option of stepping in and using either the single screen off of the right side from (#4) or the double screen off of the left side from (#5 and #3). If (#2) decides to come off of the double screen, (#5) can step in for a post up opportunity if they try and switch the double screen.