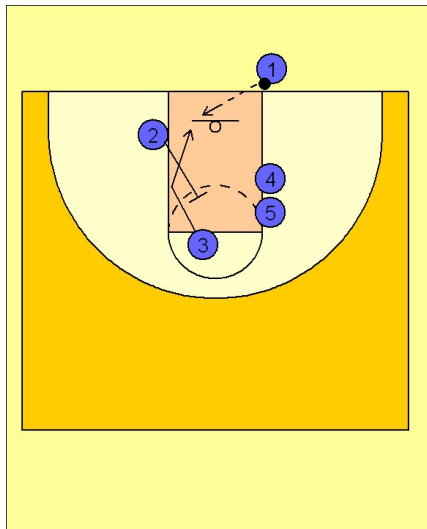


Michigan state

Ob under (3)

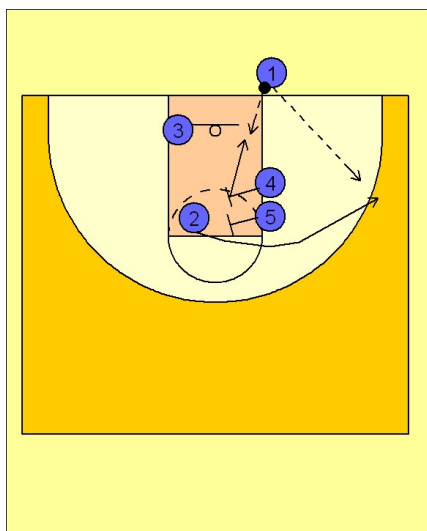
1



Michigan State OB Under

The play starts with (#2) upscreening for (#3). If (#3) is open, that is your first scoring option.

2



Michigan State OB Under

If not, (#4 and #5) will set a double screen for (#2) coming out to the wing for a jump shot. (#1) may also look for (#4) rolling to the basket after the double screen. He could be open if the defenders decide to switch the double screen.