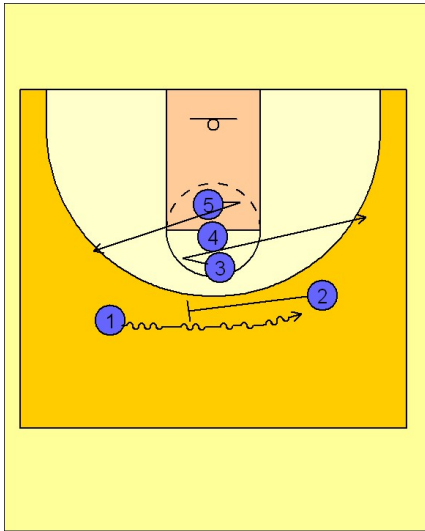


Michigan state Quick hitters (3)

1

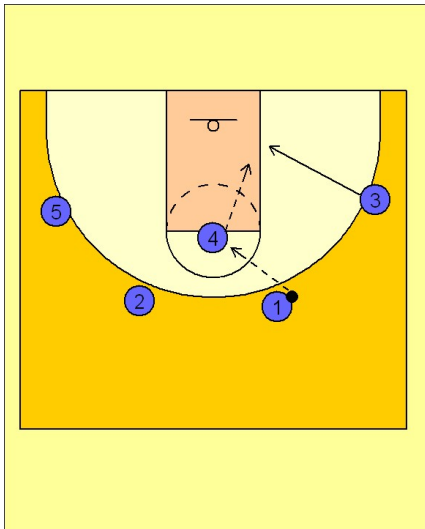


Michigan State Quick Hitter

(#1) and (#2) run a ball screen out front, while (#3, #4, and #5) are stacked at the freethrow line.

(#3) fakes away from the ball and then comes back to the ball side wing. (#5) fakes to the ball side wing and breaks out to the opposite side wing. (#4) posts up in the high post looking for the entry pass.

2



Michigan State Quick Hitter

Once (#4) receives the entry pass from (#1), (#3) cuts hard back door trying to receive a pass from(#4). (#4) may also have a driving opportunity to the basket.

If this doesn't open anything up, you could continue to run the MSU set play diagramed before with (#1 and #2) cutting to the basket and crossing out underneath with (#3 and #5) coming to set down screens for those players.

You can then get into your motion offense from there.