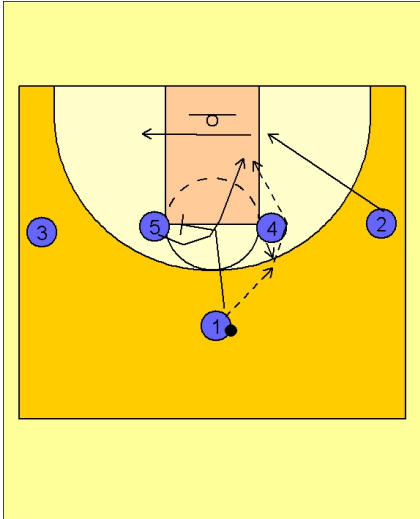




Set play (24)



Michigan State Set Play vs. Man

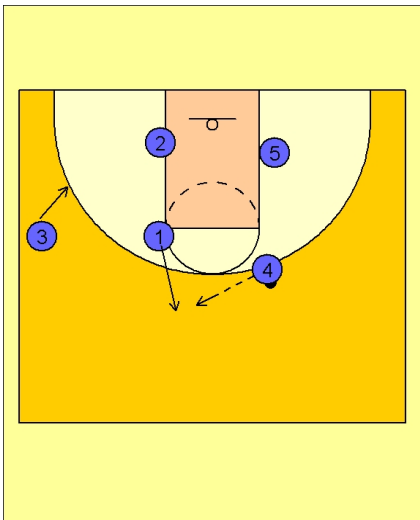
1 - 4 high set to begin.

#4 steps out a bit and receives the entry pass from #1.

On the catch, #2 cuts down to the lane and across to the opposite block.

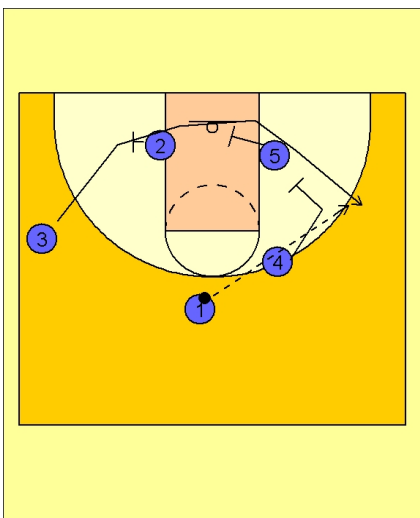
#1 cuts into the middle of the FT line and sets a screen for #5. #5 curls around the screen and into the paint.

The first look in this play is #4 to #5 inside.



Michigan State Set Play vs. Man

If #5 does not get the ball, #1 steps out after screening for #5 and receives the ball on top.



Michigan State Set Play vs. Man

On the catch, #2, #5 and #4 set a triple screen for #3 along the baseline.