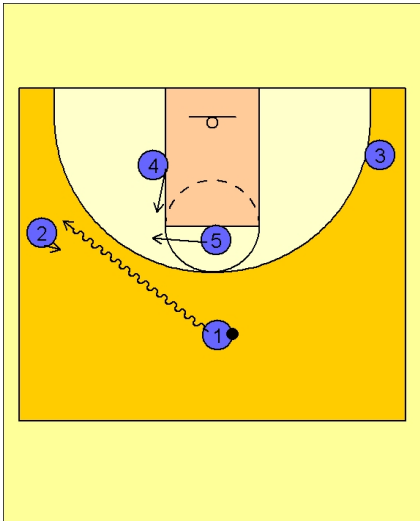




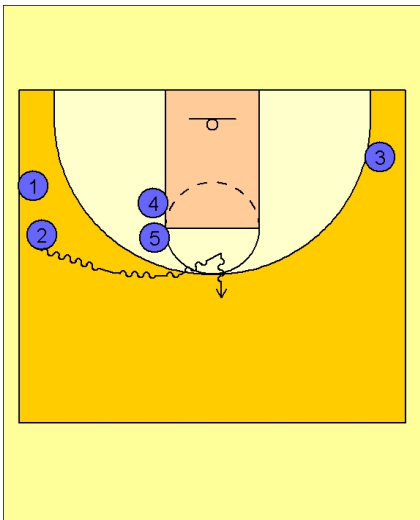
**Set play (25)**



**Michigan State Set Play vs. Man**

Play starts with #1 driving at #2 on the left wing for a dribble hand off.

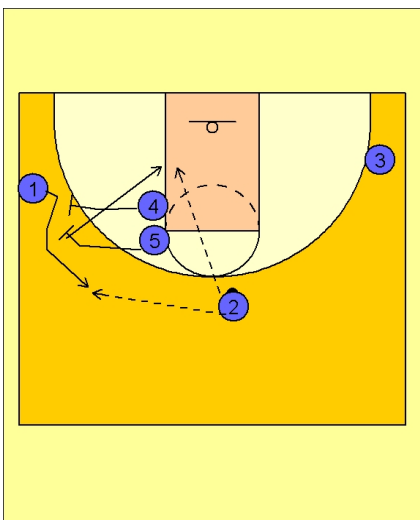
#4 and #5 stack up on the FT line left elbow area.



**Michigan State Set Play vs. Man**

#2 now drives the ball off the double stack ball screen from #4 and #5.

#2 looks to get in the lane if he can to score. If he can't, he will bounce out with the dribble to the top of the key.



**Michigan State Set Play vs. Man**

#4 and #5 are now setting a double screen for #1 on the left wing.

#2 makes the pass to #1 for the shot.

Once #1 cuts off the double screen, the top player, #5, cuts to the low block and #4 pops out to the left wing.



**Michigan State Set Play vs. Man**

#1 either takes the three point shot or will look to feed the post directly or pass to the wing player #4 who will feed #5 inside.

