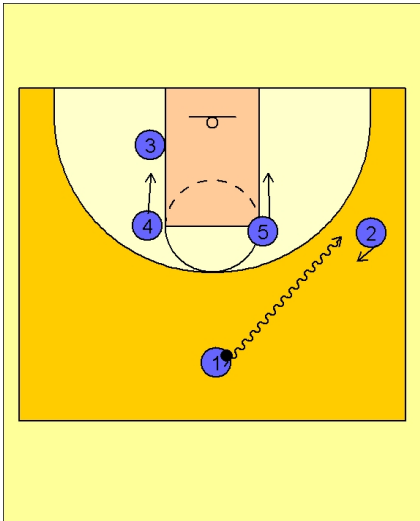




Set play (26)

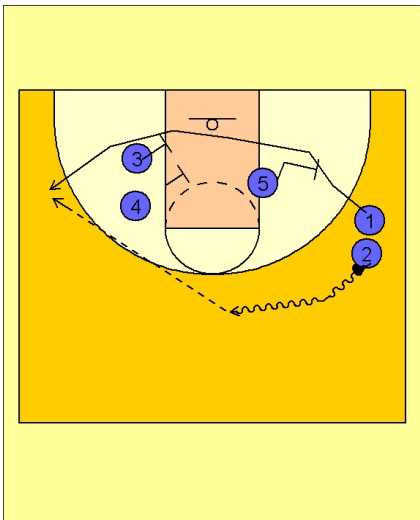


Michigan State Set Play vs. Man

#1 drives the ball to the right wing and executes a dribble hand off with #2.

#3 and #4 stack up on the left side.

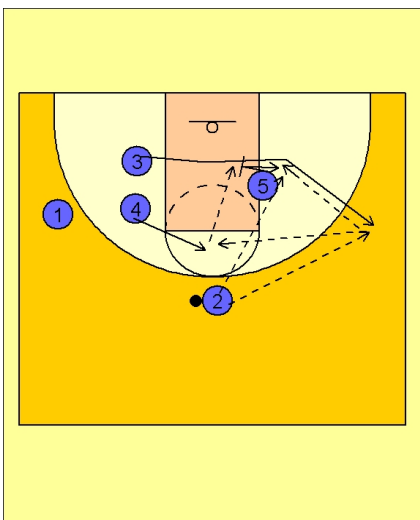
#5 slides down to the mid-post area.



Michigan State Set Play vs. Man

#2 takes the ball on the dribble to the top while #1 uses a back screen from #5 and then uses a double screen on the left block.

#2 will pass to #1 if he is open for the shot.



Michigan State Set Play vs. Man

If #1 does not get the ball, #3 is cutting off a single screen from #5 on the right block as soon as #1 cut off the double screen he was setting with #4.

#4 flashes to the high post for an entry pass, shot or dump pass down into #5 sealing inside.