

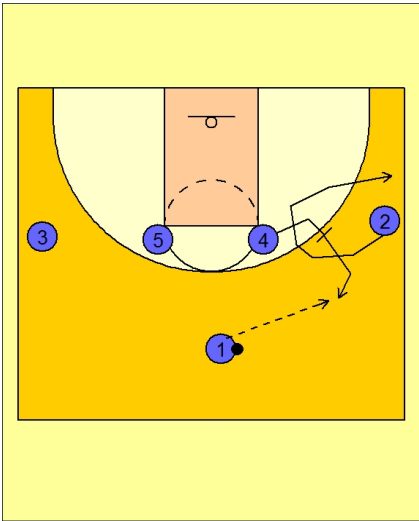


Set play (27)

Michigan State Set Play vs. Man

1 - 4 high to begin.

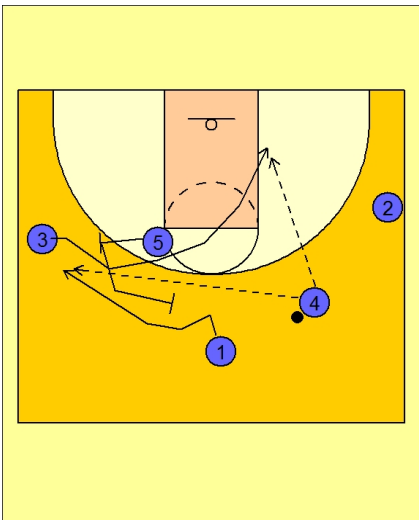
#2 curls around a screen from #4 and then back out to the wing where he started. #4 screens and then pops toward the ball to receive the entry pass.



Michigan State Set Play vs. Man

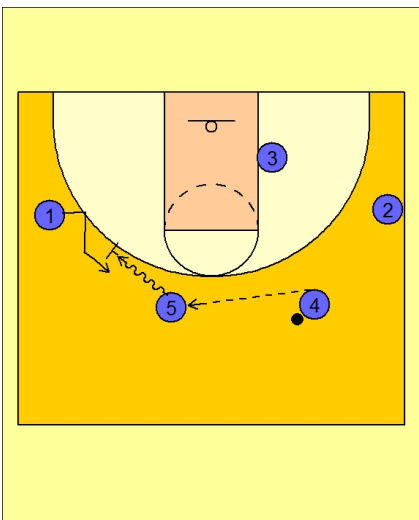
Once #4 has the ball, #5 sets a screen for #3 on the left wing. #3 curls around the screen and into the lane. #4 looks to hit #3 if he is open.

After screening, #5 then sets a flare screen for #1, who cuts to the left wing area looking for the over the top pass from #4.



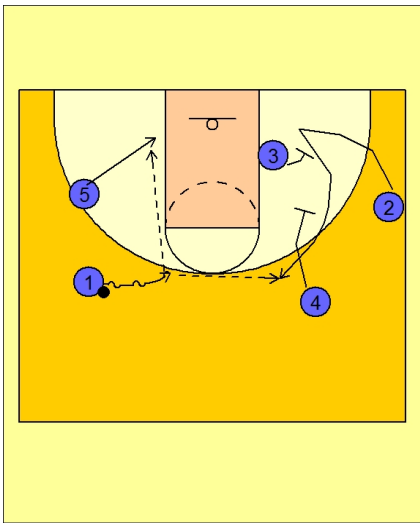
Michigan State Set Play vs. Man

If neither player is open and gets the ball, #4 will pass to #5 who will execute a dribble hand-off with #1 on the left wing.





Michigan State Set Play vs. Man



#1 comes off the screen looking to score, dump the ball down to #5 rolling to the basket, or pass to #2 coming off the double screen on the right side from #4 and #3.