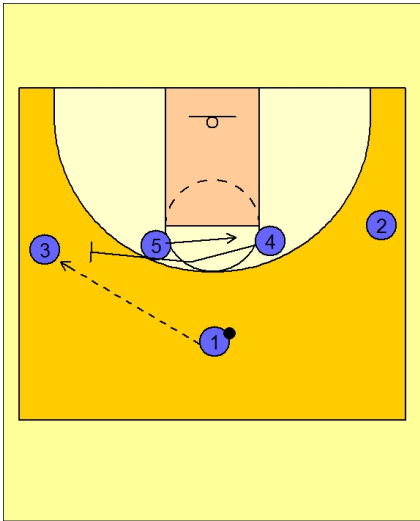




Set play (28)

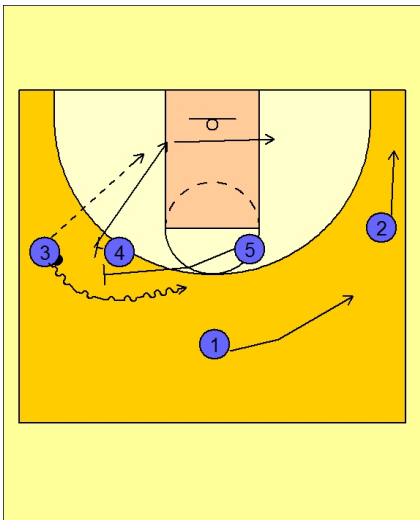


Michigan State Set Play vs. Man

1 - 4 high set to begin again.

#1 passes to #3 on the left wing.

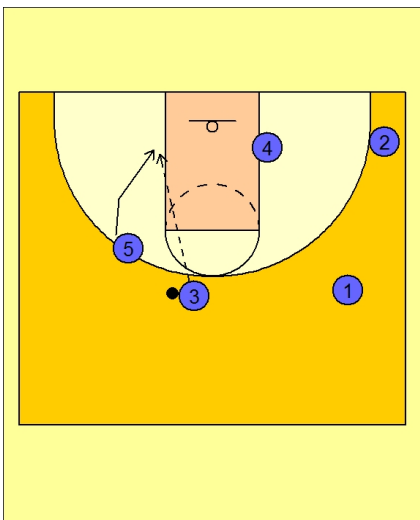
On the pass, #4 is cutting towards #3 while #5 cuts away to the opposite FT line elbow area.



Michigan State Set Play vs. Man

#4 now "slips" the screen and cuts to the basket while #5 is cutting back quickly to execute the ball screen with #3.

#1 cuts to the opposite side of the floor.



Michigan State Set Play vs. Man

If #3 does not get a shot, he will look to hit #5 rolling to the basket.