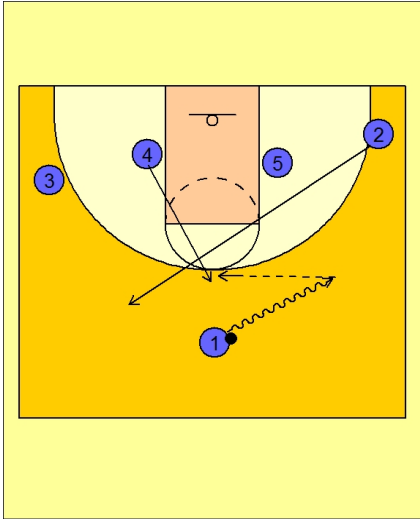




Set play (29)

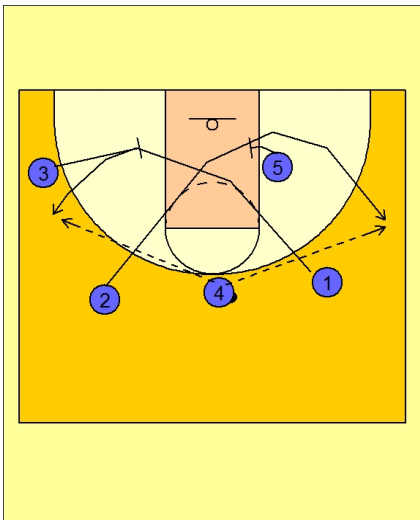


Michigan State Set Play vs. Man

#1 drives the ball to the right side of the floor.

#2 cuts up to the top of the floor opposite #1.

#4 cuts to the top of the key to receive the entry pass from #1.



Michigan State Set Play vs. Man

Once #4 has the ball, #2 and #1 cut into the lane and cross out to the opposite wing off of a down screen from #5 and #3.

#4 hits the open shooter.