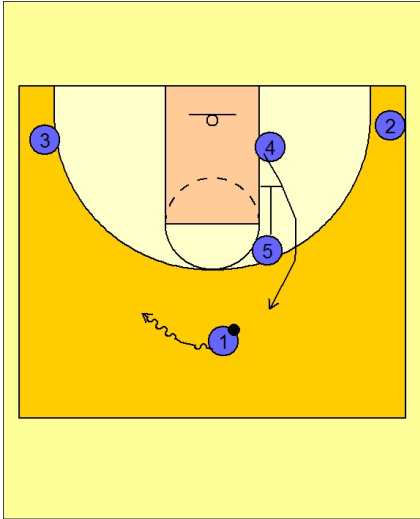




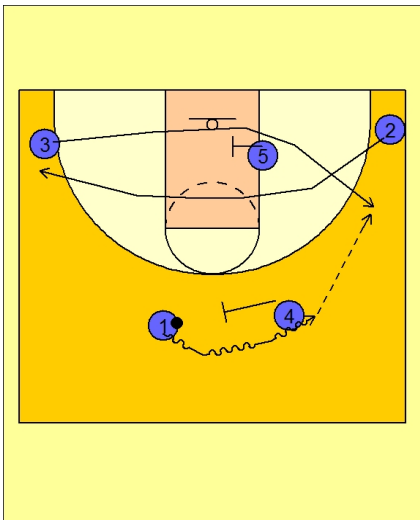
Set play (30)



Michigan State Set Play vs. Man

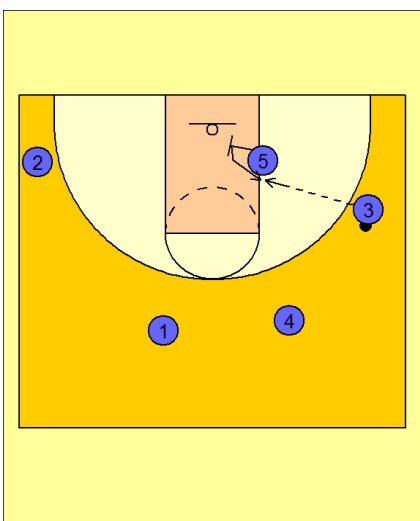
#1 drives the ball to the left side of the floor.

#5 down screens for #4. #4 breaks up to the top of the floor opposite of #1.



Michigan State Set Play vs. Man

#1 now uses #4 and executes a ball screen on top. #2 clears out to the opposite corner area while #5 screens in for #3, trying to free him for an open jumper on the right side of the floor.



Michigan State Set Play vs. Man

If #3 does not have a shot, he will look to hit #5 who has just screened in the lane, sealed and is looking for the post entry pass.