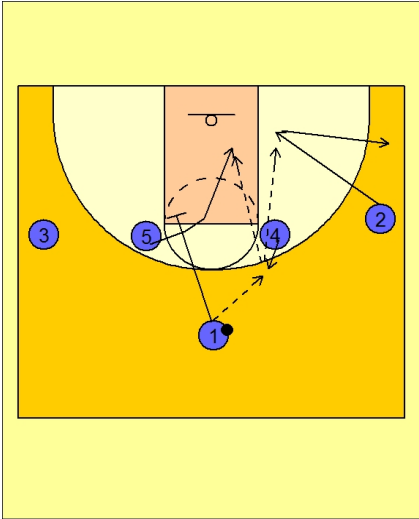




**Set play (31)**



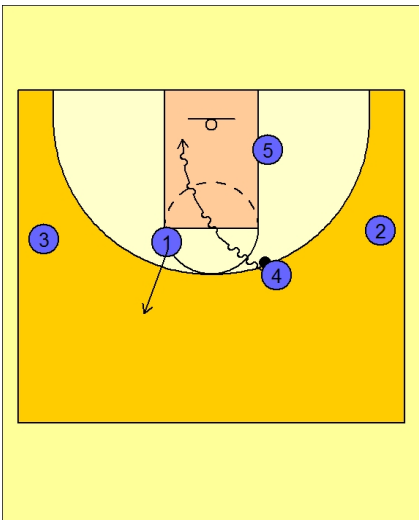
**Michigan State Set Play vs. Man**

1 - 4 high set to begin.

#1 passes to #4.

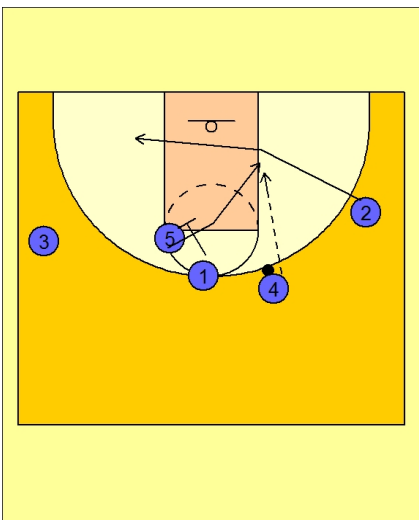
#2 cuts first looking for the quick back door pass from #4. #2 then cuts out to the wing / corner area.

#1 then screens down in the FT line area while #5 cuts over the top of the screen looking for the pass from #4.



**Michigan State Set Play vs. Man**

If #5 does not get the ball, #4 will look to attack the cleared out side of the floor.



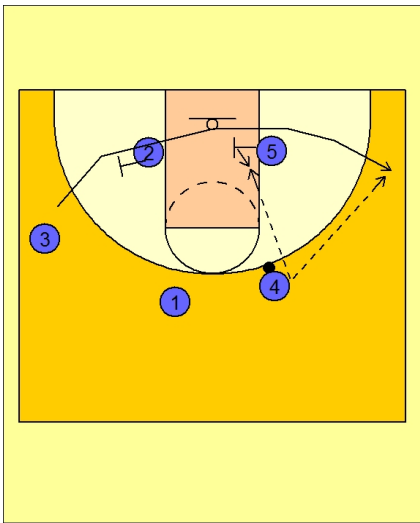
**Michigan State Set Play vs. Man**

Another option on this play is for #2 to cut all the way through on the first back door cut.

#5 will still follow over the top of #1's screen.



**Michigan State Set Play vs. Man**



Now, on this option, #3 will use a double staggered screen along the baseline from #2 and #5.