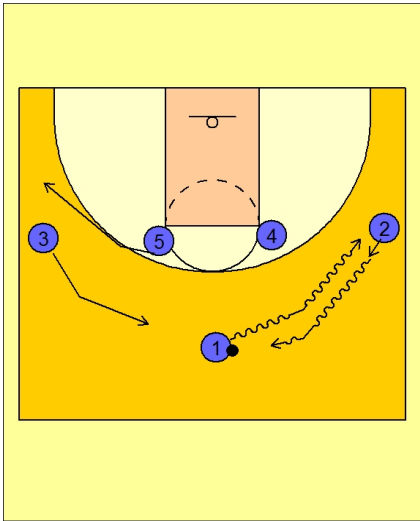




Set play (32)

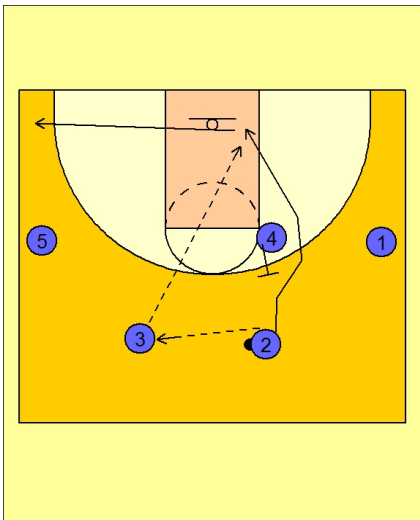


Michigan State Set Play vs. Man

1 - 4 high set to begin. MSU takes a page out of Pete Carrill's Princeton Series here.

#1 drives at #2 on the right wing and executes a dribble hand-off.

#5 cuts out and #3 cuts up to the top opposite #2 with the ball.

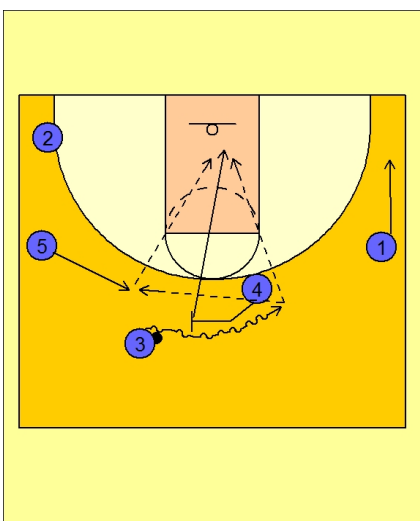


Michigan State Set Play vs. Man

#2 passes the ball to #3 on top and then uses a back screen from #4.

#3 looks to pass to #2 if he is open.

#2 cuts through the lane and then out to the opposite corner area.



Michigan State Set Play vs. Man

Since #4's defender may have to help on the back screen momentarily, it is a good idea now to have #4 screen quickly for #3 (since #4's defender may be late on the help).

#3 drives the ball off the ball screen from #4.

#4 rolls to the basket.

#5 fills up behind and looks to receive the next pass on top for a better post feeding angle.



Michigan State Set Play vs. Man

If #5 does not pass to #4, he will execute either a pass and screen and roll with #2, or a dribble hand-off with #2.

#2 takes the ball and attacks to score off the screen or look to dump the ball to #5 rolling.

