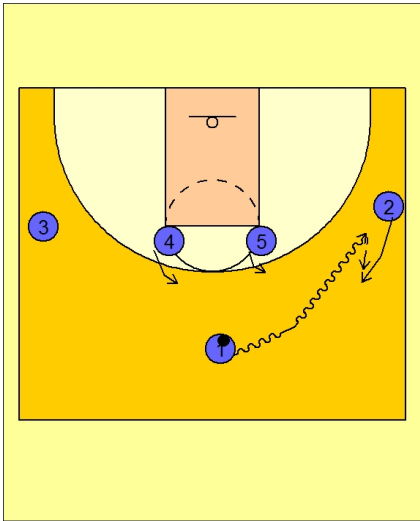




Set play (33)

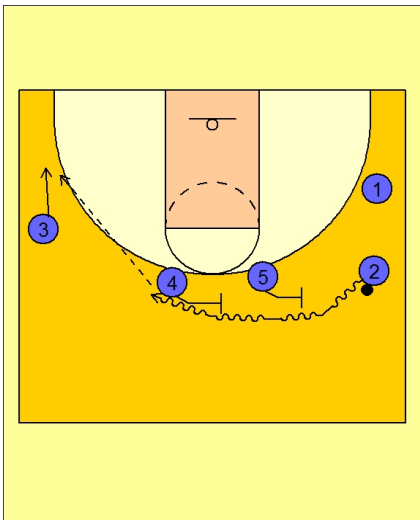


Michigan State Set Play vs. Man

1 - 4 high set to begin.

#1 executes a dribble hand-off with #2 on the right wing.

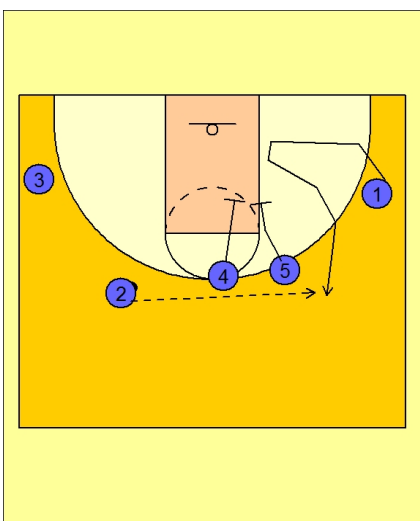
#4 and #5 begin to step out on top.



Michigan State Set Play vs. Man

#2 takes the hand - off and drives the ball off a double staggered ball screen from #5 and #4.

#3 flattens out on the back side looking for the drive and kick out pass.



Michigan State Set Play vs. Man

If #2 or #3 does not have a shot, #4 and #5 are setting a double down screen for #1 on the right side of the floor.