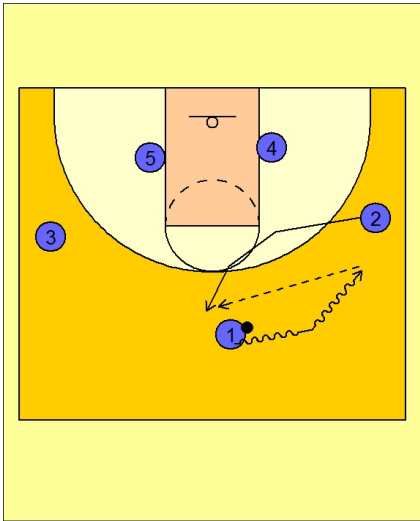




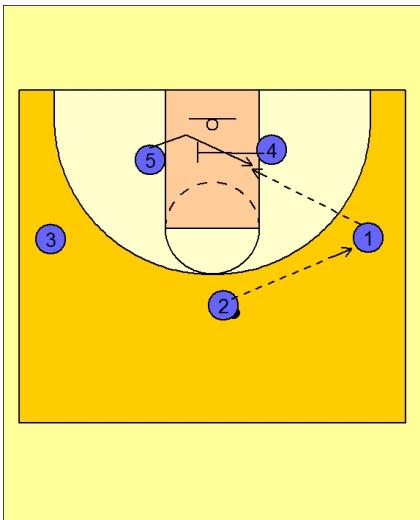
Set play (34)



Michigan State Set Play vs. Man

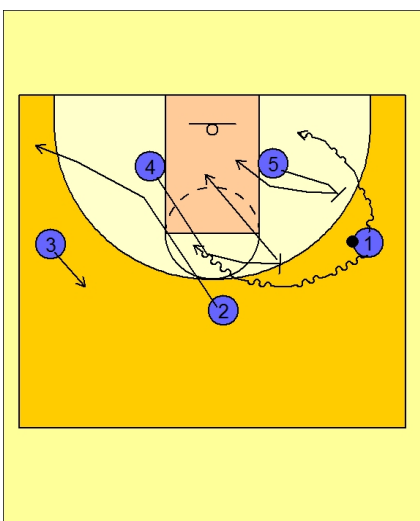
#1 drives the ball at #2 on the right wing.

#2 cuts up to the top and receives the pass from #1.



Michigan State Set Play vs. Man

#2 then passes back to #1 and #1 will look to feed #5 inside off the screen from #4.



Michigan State Set Play vs. Man

#2 cuts through to the opposite corner area.

#1 can now use a ball screen from #4, who will then roll to the basket, OR, a ball screen from out from the block from #5. #5 would then follow #1 off the ball screen cutting to the rim.