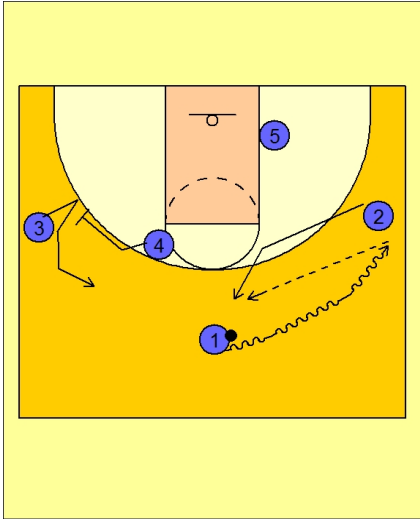




Set play (35)

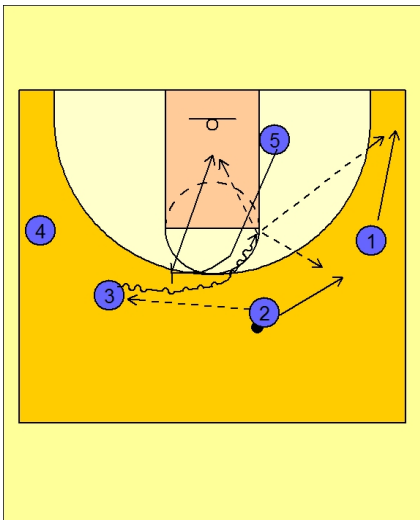


Michigan State Set Play vs. Man

#1 drives the ball at #2 on the right wing.

#2 cuts up to the top and receives the pass from #1.

As this is happening, #4 is screening out for #3. #3 cuts up to the top opposite the ball and player #2.

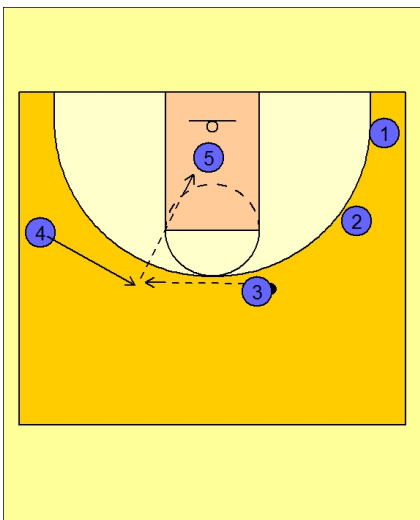


Michigan State Set Play vs. Man

#2 passes to #3.

#3 now uses the ball screen from #5.

#3 attacks to score, kick out to #1 or #2, or hit #5 rolling to the basket.



Michigan State Set Play vs. Man

#4 will follow behind #3's penetration and look to receive the pass from #3 for the open jumper or the better passing angle to #5.