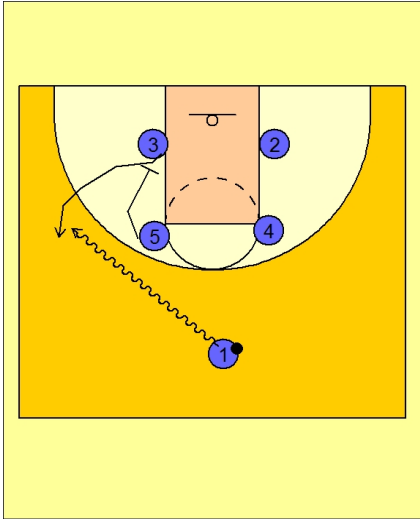




Set play (36)



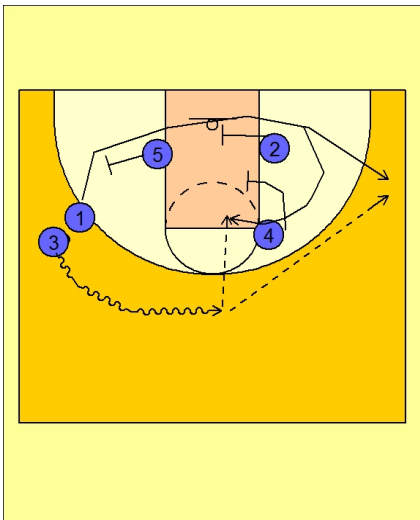
Michigan State Set Play vs. Man

Box set to begin.

#1 drives the ball to the left wing.

#5 down screens for #3.

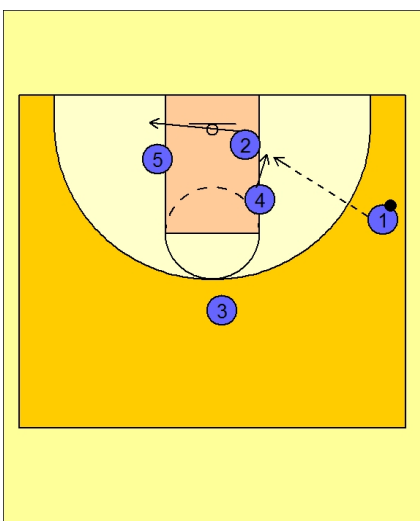
#1 executes a dribble hand-off with #3 coming off the down screen.



Michigan State Set Play vs. Man

#3 takes the ball on the dribble to the top while #1 comes off a triple staggered screen from #5, #2 and #4.

#1 can come out to the wing for the open shot or he can curl around the screens from #2 and #4.



Michigan State Set Play vs. Man

If #1 catches on the wing, #2 will clear out and #4 will look to post up.