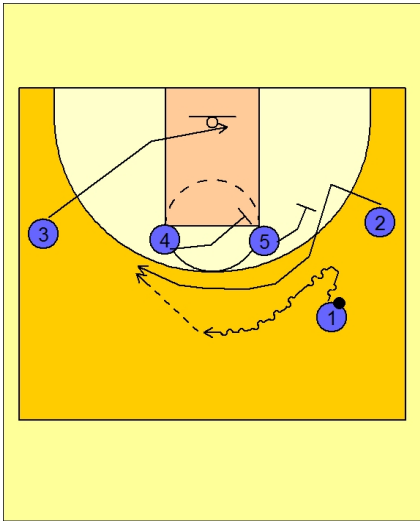




Set play (37)



Michigan State Set Play vs. Man

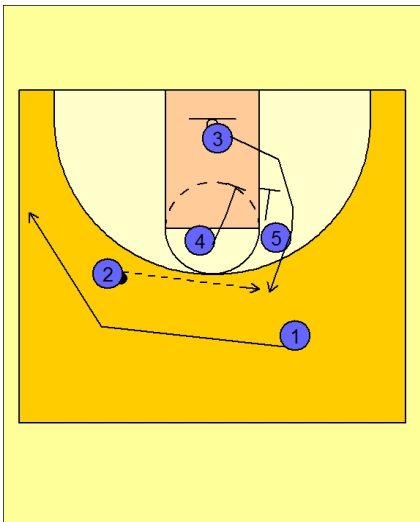
1 - 4 high set to begin.

#1 drives towards #2 on the right wing.

#2 then cuts over the top of screens from #4 and #5.

#3 cuts under the basket at the same time.

#1 will pass to #2.



Michigan State Set Play vs. Man

#2 can look to catch and shoot, catch and attack the rim or look to hit #3 cutting up off the double screen from #4 and #5.

#1 has passed to #2 and has cleared out to the ball side wing / corner area.