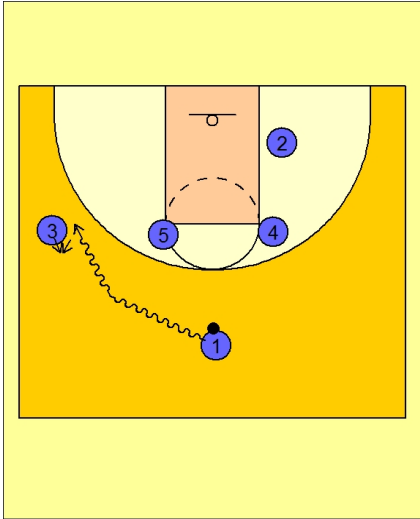


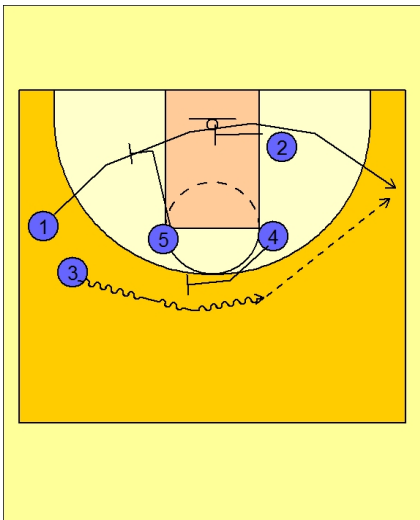


Set play (38)



Michigan State Set Play vs. Man

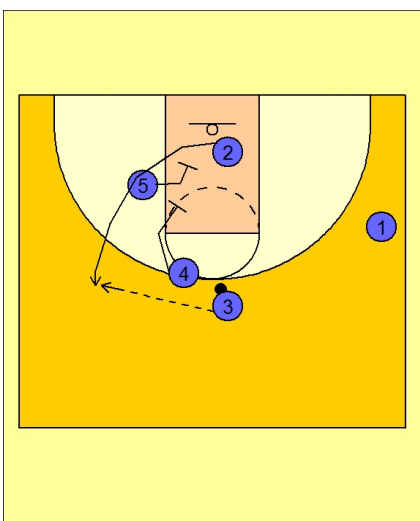
#1 drives at #3 on the left wing and executes a dribble hand-off.



Michigan State Set Play vs. Man

#3 takes the ball off a ball screen on top from #4.

As this action is happening, #5 and #2 set a double staggered screen along the baseline for #1.



Michigan State Set Play vs. Man

If #1 is not open, #4 and #5 set a double screen for #2.