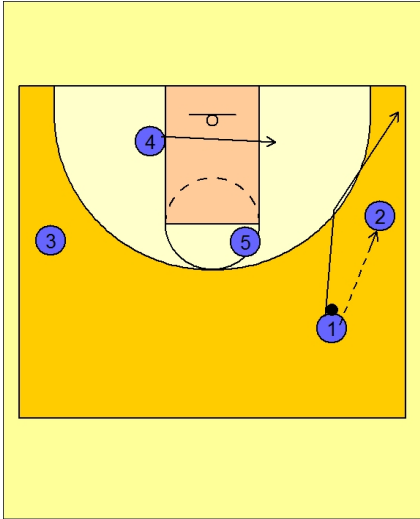




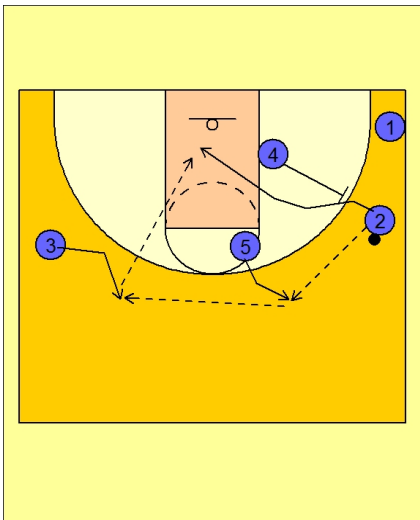
Set play (39)



Michigan State Set Play vs. Man

#1 passes to #2 on the right wing and cuts to the ball side corner area.

#4 cuts over to the ball side low block.

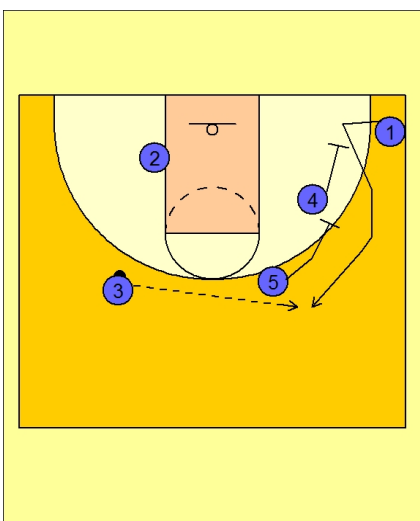


Michigan State Set Play vs. Man

#5 steps out and receives the pass from #2.

#4 steps out and back screens for #2.

#5 reverses the ball to #3 who looks to hit #2 cutting off the back screen in the lane.



Michigan State Set Play vs. Man

If #2 is not open, #4 and #5 will set a double staggered screen for #1.