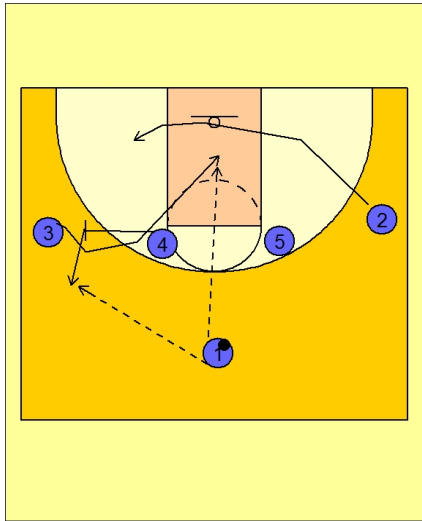




Set play (40)



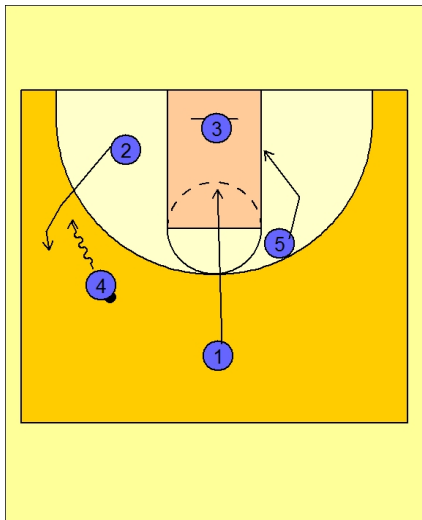
Michigan State Set Play vs. Man

1 - 4 high set to begin.

First #2 cuts through the lane and out to the left side of the floor.

#4 then steps out and screens for #3. #3 cuts over the screen and in the lane. #1 will pass to #3 if he is open.

#4 screens and then pops out to get the next pass from #1.

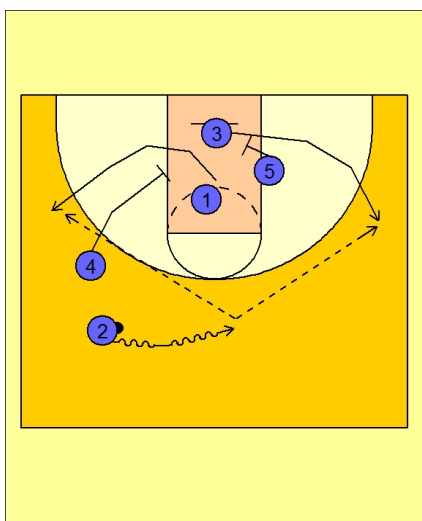


Michigan State Set Play vs. Man

#4 then executes a dribble hand-off with #2.

#3 is now under the basket while #1 is cutting into the middle of the lane.

#5 is moving down to the right low block area.



Michigan State Set Play vs. Man

#2 centers the ball off the dribble hand-off from #4.

#2 then looks for #3 popping out to the right wing off the down screen from #5 or pass to #1 cutting out to the left wing off the down screen from #4.