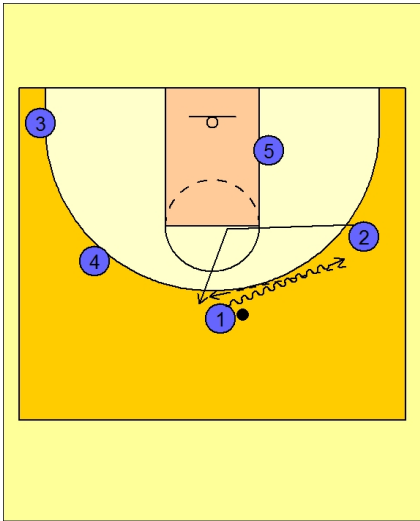




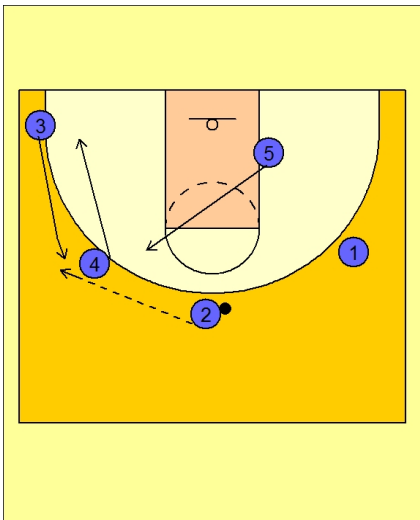
**Set play (41)**

**Michigan State Set Play vs. Man**



#1 dribbles at the wing player #2.

#2 cuts into the FT line area and then breaks up on top and receives the pass from #1.

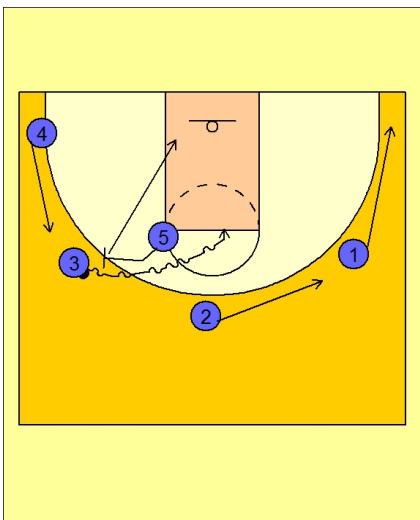


**Michigan State Set Play vs. Man**

#4 cuts away to the opposite corner area while #3 cuts up to get the ball. #4 could also screen for #3 to get him open.

#2 passes to #3 on the wing.

#5 now sprints up to the top.



**Michigan State Set Play vs. Man**

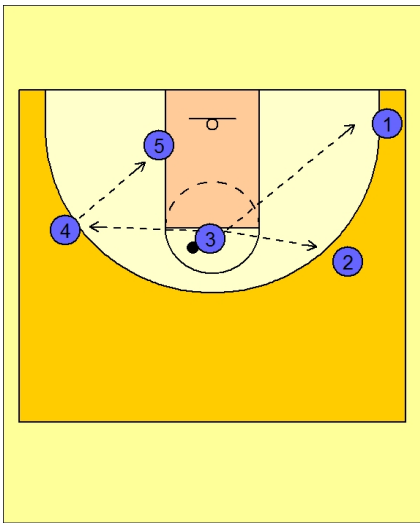
#3 drives off the pick from #5.

#5 rolls while #3 tries to get in the lane and score.

#2, #1 and #4 are sliding to the open spots on the perimeter.



**Michigan State Set Play vs. Man**



#3 will look to kick it out on the right side of the floor for the open 3 point shot, or pass back to the other side of the floor for the open 3 for #4 and perhaps the post up for #5.