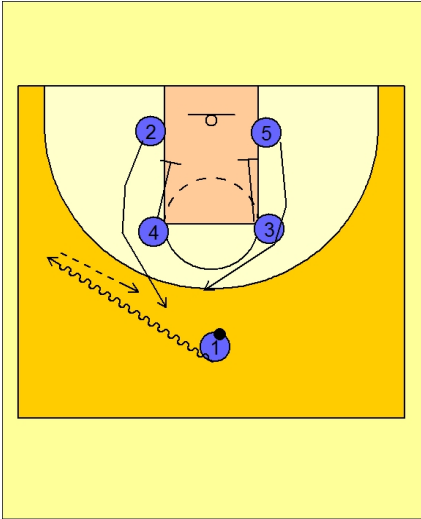




**Set play (42)**

**Michigan State Set Play vs. Man**



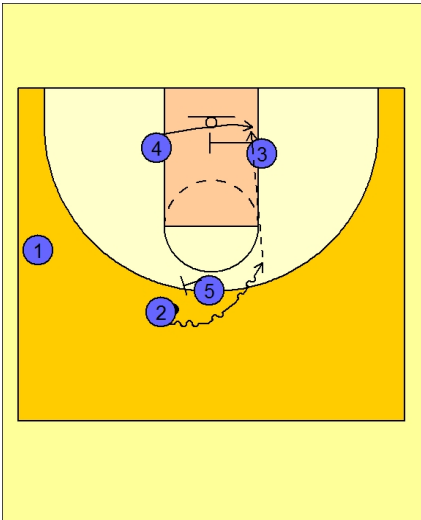
Box set to begin.

#1 drives the ball to the left side of the floor.

#4 and #3 set down screens for #2 and #5.

#1 passes the ball to #2 breaking up to the top FT lane line extended.

**Michigan State Set Play vs. Man**

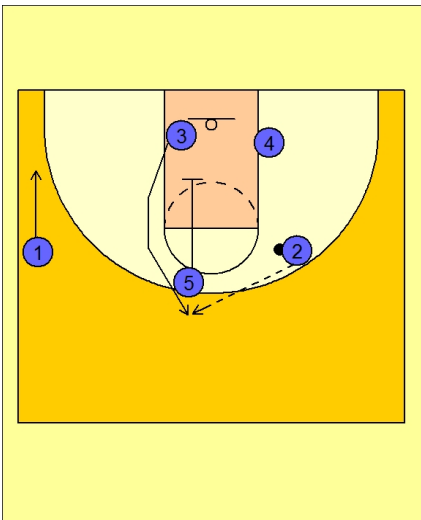


#5 is now in position to execute a pick and roll with #2.

As #2 comes off the ball screen, #3 screens in the lane for #4.

#2 looks to score off the screen or hit #4 posting up in the paint.

**Michigan State Set Play vs. Man**



If #4 is not open, #5 is setting a down screen for #3 for the open jumper on top.