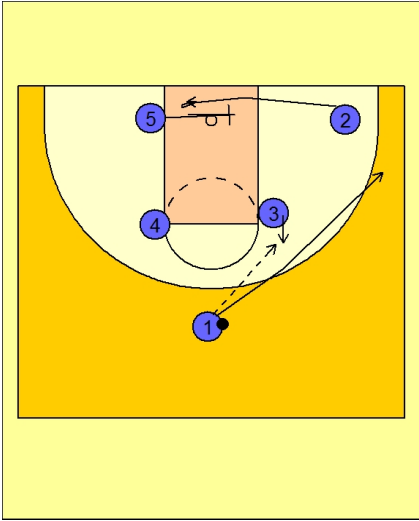




Set play (43)

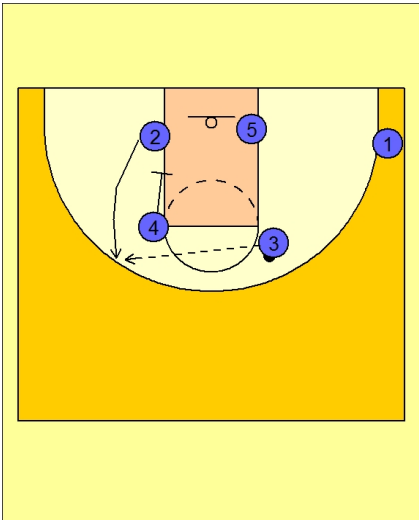


Michigan State Set Play vs. Man

#3 steps out to receive the entry pass from #1.

#1 cuts over the ball and to the ball side corner.

As that action is happening, #5 is screening in the lane for #2 cutting under the rim.



Michigan State Set Play vs. Man

#4 now sets the second staggered screen for #2.

#3 looks to hit #2 breaking up to the top for the open jump shot.