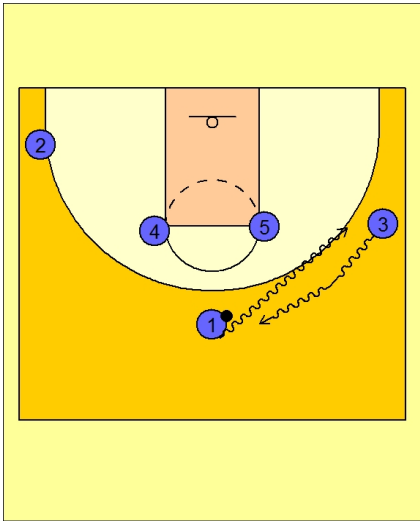




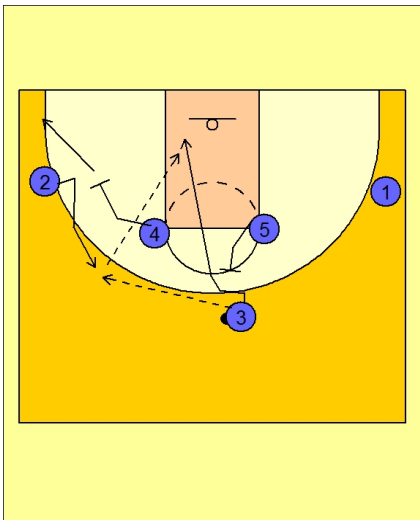
Set play (44)



Michigan State Set Play vs. Man

MSU runs this play a ton.

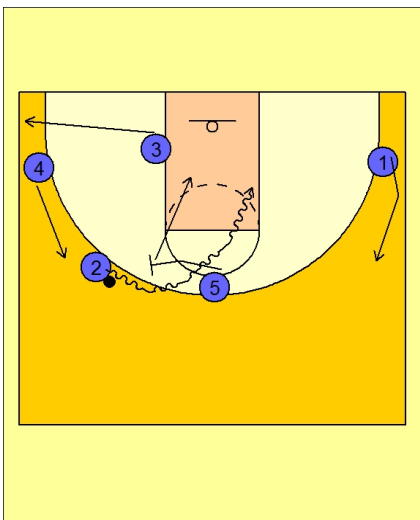
#1 executes a dribble hand-off with #3 on the right wing.



Michigan State Set Play vs. Man

#3 brings the ball up to the top and passes to #2 on the left wing, who has broken up from the screen from #4.

As soon as #3 passes to #2, #5 sets a back screen for #3. #3 cuts to the basket looking for the pass back from #2.



Michigan State Set Play vs. Man

#2 and #5 now execute a pick and roll.

#4 slides up, #3 cuts out to the corner and #1 slides up to the top wing area as #2 creates and gets into the paint.

#5 rolling to the rim is also a great option, and if not open on the initial roll, they like to play 4 around 1 and get the ball inside or drive and kick on the perimeter.