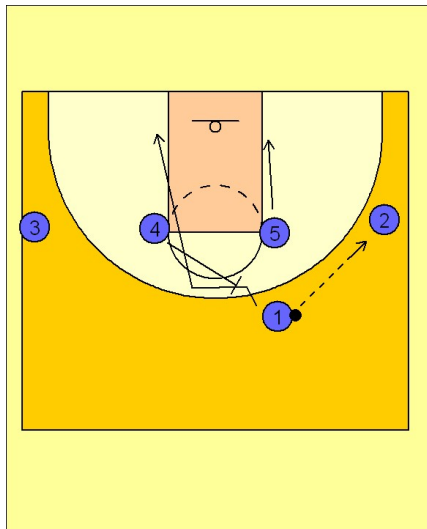


Michigan state

Set play (1)

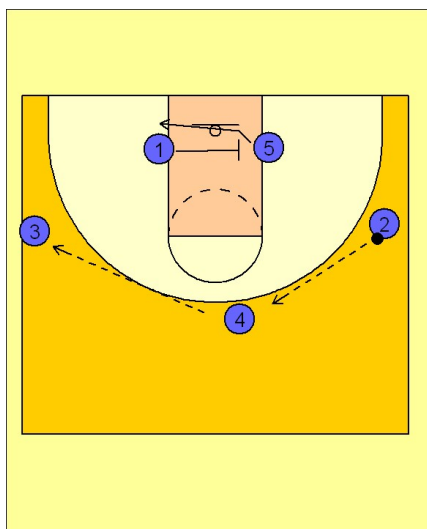
1



Michigan State Set Play

(#1) enters the ball to a wing. In this example, it is the (#2) man. (#1) then gets a back screen from the (#4) man stepping out to the top of the key area. (#5) slides down to the ball side block.

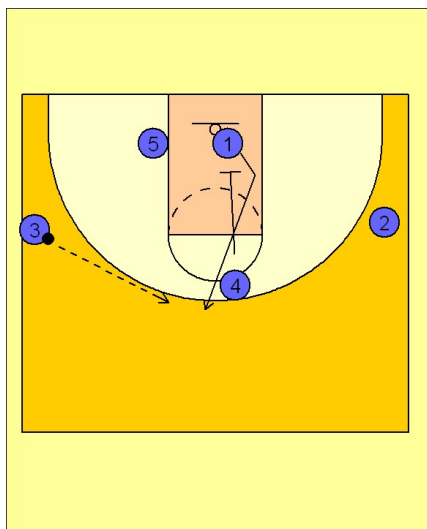
2



Michigan State Set Play

After (#4) sets the back screen, he steps out to receive the pass from the (#2) man. (#4) then quickly reverses the ball to the (#3) man. While the ball is being reversed, (#1) sets a cross screen on the (#5) defender looking for a quick post up situation or mismatch if there was a switch on the screen. (#3) can then load up the post.

3



Michigan State Set Play

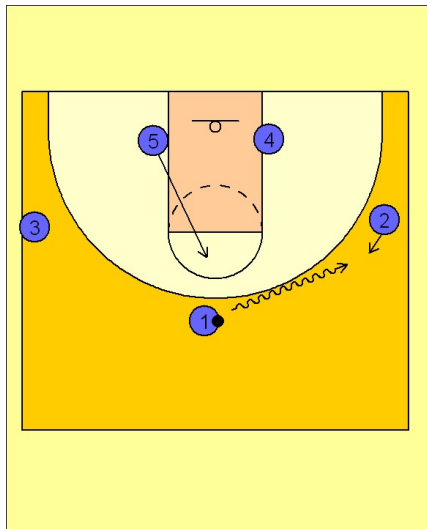
After (#4) reverses the ball to (#3), he begins head hunting and looking for a down screen on (#1's) defender in the lane to complete the "pick the picker" action in the post. (#1) receives the pass from the (#3) man.

Michigan state

Set play (1)

4

Michigan State Set Play



I've seen them do one of two things here. Since they are already in their 3 out 2 in alignment, they can begin their motion offense. I have also seen them begin their dribble weave action from this alignment (as described in the "Dribble Weave" play before)