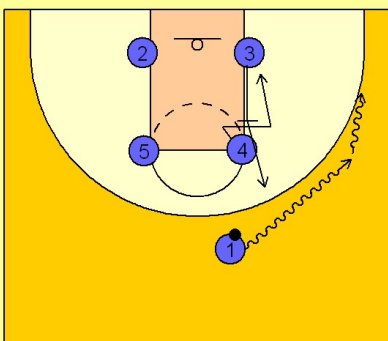


Michigan state

Set play (10)

1

Michigan State Set Play

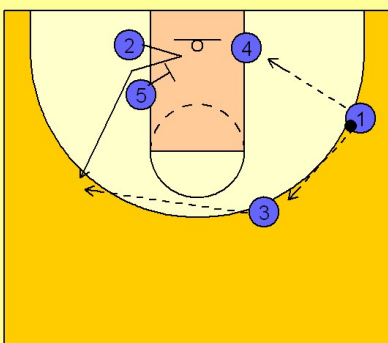


Box set to start. (#1) dribbles to a side, with (#3) preparing to set a back screen on (#4). (#4) makes a move to the middle and comes back over the top of the screen rolling down to the ball side block, looking for a post up situation.

After (#3) sets the back screen, he pops out for ball reversal.

2

Michigan State Set Play



If (#4) is open, they load him up. On the back side, (#5) is stepping into the lane setting up a down screen for the (#2) man who has taken is man in the lane and then out for the jumper on the other side.