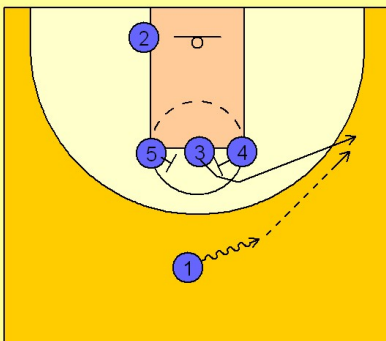


Michigan state

Set play (11)

1

Michigan State Set Play

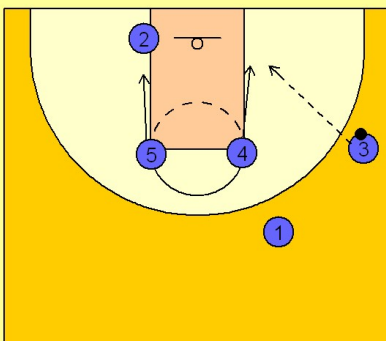


(#1) takes it to the side that the middle man (#3) picks. If he were to go to the left side, the (#2) man would slide over to the other block.

In this diagram, (#3) takes the right side off of a screen from (#4). (#1) takes the ball over to (#3's) side for a better passing angle.

2

Michigan State OB Under

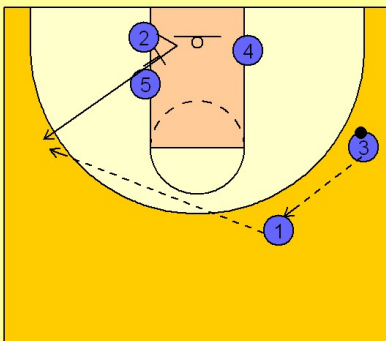


After the ball is entered to (#3), (#4) slides down to the block looking for a post up opportunity. There may be a mismatch if they switched the screen freeing (#3) to the wing.

(#5) slides down on the other side to set a screen for the (#2) man.

3

Michigan State OB Under



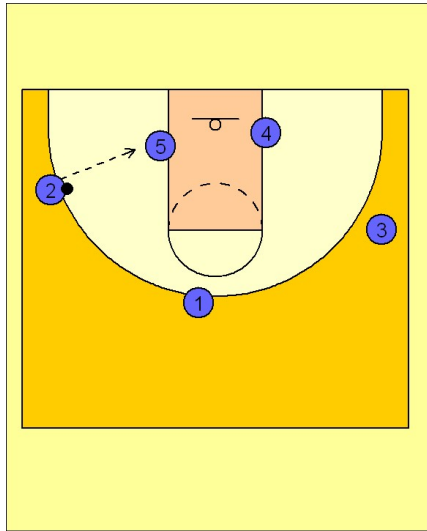
If the post up for (#4) is not there, (#3) will reverse the ball to (#1) and (#1) will look for a jump shot for (#2) off of (#5's) screen.

Michigan State will then start their motion offense.

Michigan state

Set play (11)

4



Michigan State Set Play

(#2) can also look to post up (#5) after the down screen, pin and seal on the blocks.