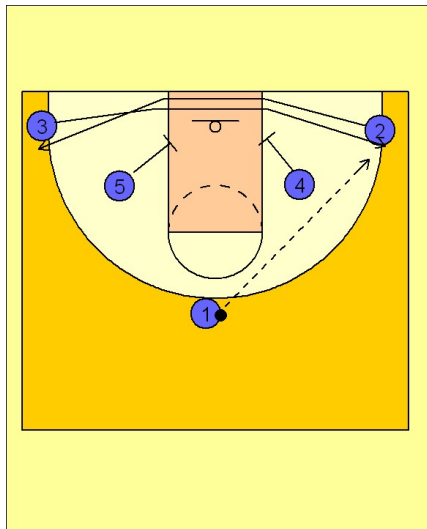


Michigan state

Set play (13)

1



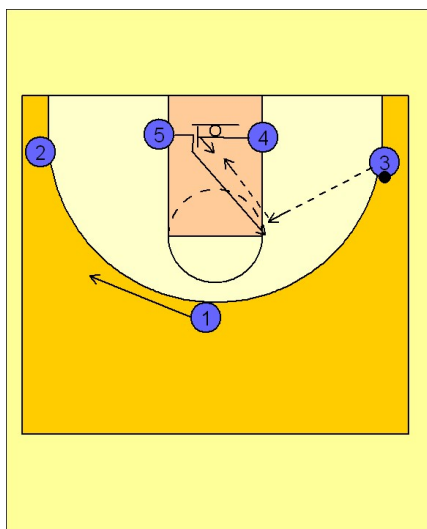
Michigan State Set Play

(#2 and #3) cross out underneath the basket getting down screens from (#4) and (#5).

(#1) chooses a side by passing to either (#3) on the right wing or (#2) on the left wing.

In this diagram, (#1) enters to (#3) on the right wing.

2

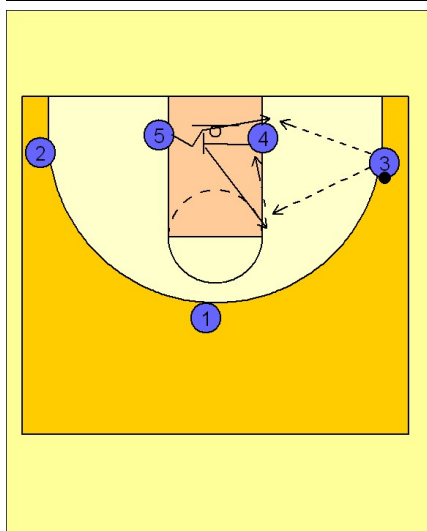


Michigan State Set Play

Once (#3) receives the ball, (#4) sets a cross screen for (#5), who has the option to flash low or high off of the screen, depending on how he is being guarded.

If he flashes high, (#4) will pin and seal in the post looking for a high / low pass from (#5).

3



Michigan State Set Play

If (#5) fakes high and goes low around the screen to the block, (#4) would set the screen and pop back up to the high post area, still looking for a pin and seal in the post.

If (#5) gets the ball in the low post, the (#4) man would dive to the basket looking for a pass from (#5).