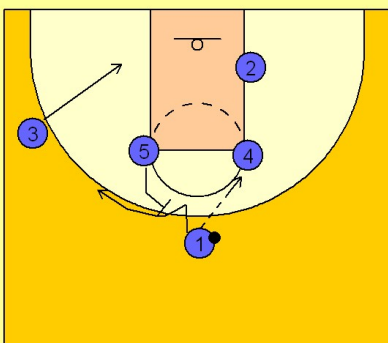


Michigan state

Set play (15)

1

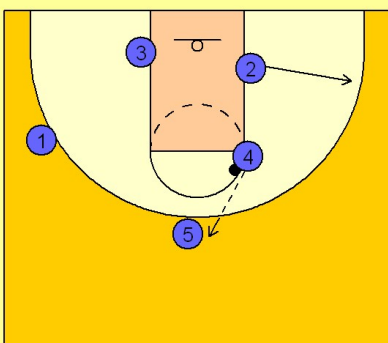
Michigan State Set Play vs. Man



#1 enters to #4 on the right elbow. #5 sets the back screen for #1 who fades to the back side of the floor. #3 cuts to the low block opposite the ball.

2

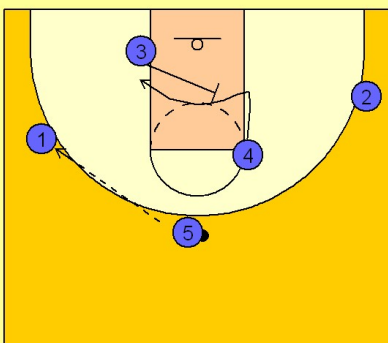
Michigan State Set Play vs. Man



#2 steps out to the wing. #4 passes to #5 who steps out after back screening for #1.

3

Michigan State Set Play vs. Man



#5 passes to #1 on the wing. #3 sets a diagonal back screen for #4 who cuts to the ball side block looking for the post pass.

Michigan state

Set play (15)

4

Michigan State Set Play vs. Man

If #4 isn't open, #1 may look for #3 coming off a staggered down screen from #2 and #5.

