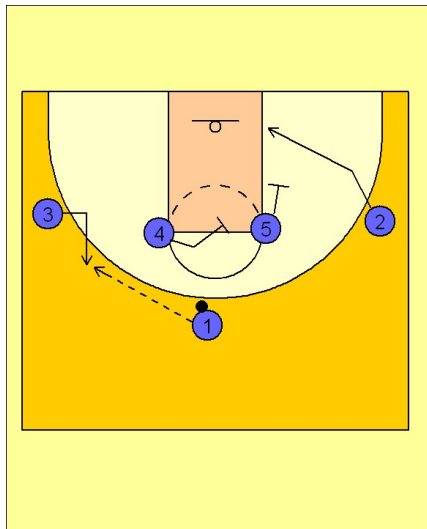


Michigan state

Set play (16)

1

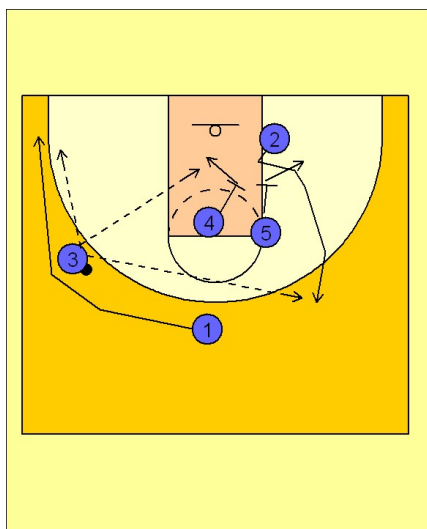


Michigan State Set Play vs. Man

1 - 4 high alignment to start.

#1 enters to #3 on the left wing. #2 breaks down to the opposite low block while #4 and #5 set up for a double screen for #2.

2



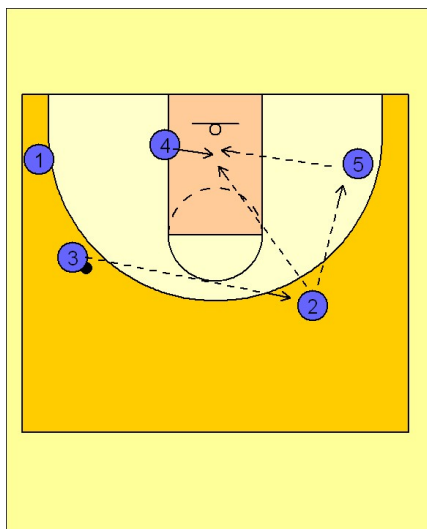
Michigan State Set Play vs. Man

#1 follows his pass behind #3 on the left wing and could receive a pass for a shot on the left corner.

#2 breaks high off the double screen from #4 and #5 looking for the open jump shot at the top of the key area.

The inside post player (#4), looks to post up after #2 comes off the double screen.

3



Michigan State Set Play vs. Man

If #2 does not have the shot he will look to hit #4 in the post ducking in or look to hit #5 on the right corner area who may have a better post passing angle into #4.