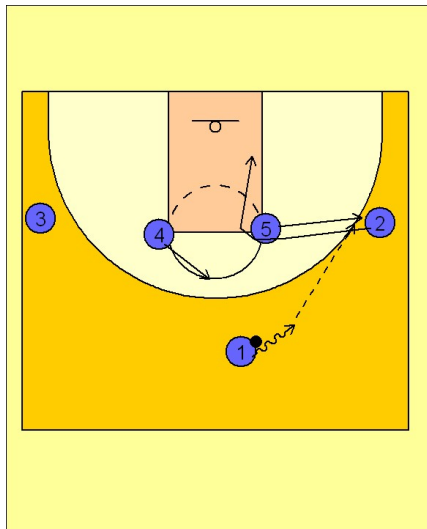


Michigan state

Set play (17)

1



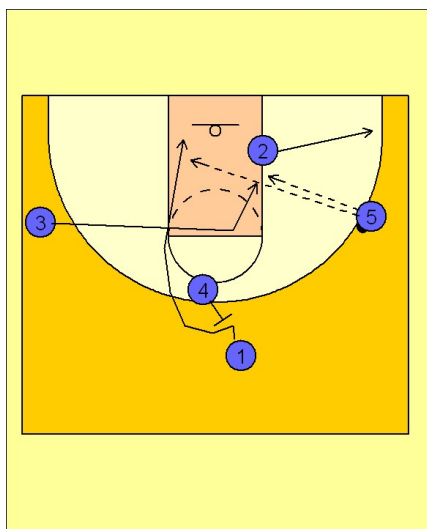
Michigan State Set Play vs. Man

1 - 4 high across to start.

#5 steps out to the wing after #2 curls over the top of him and to the block.

#4 steps to the high post area as #1 is entering the ball to the right wing #5.

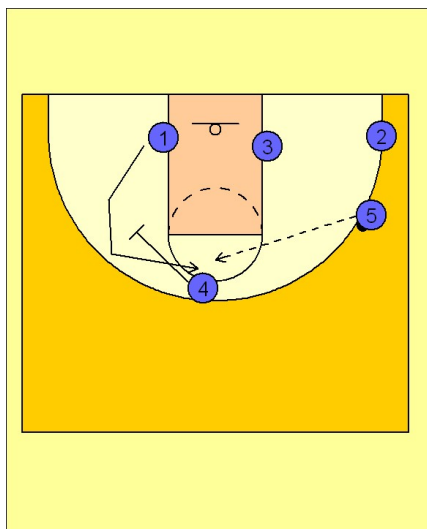
2



Michigan State Set Play vs. Man

Once #5 has the ball, #2 breaks to the ball side corner. #4 sets a back screen for #1 and #3 breaks to the high post and then to the ball side block just vacated by #2.

3



Michigan State Set Play vs. Man

If nothing is available with those options, #4 sets a down screen for #1. #5 can look to hit #1 at the top of the key area for the open shot.