

Michigan state

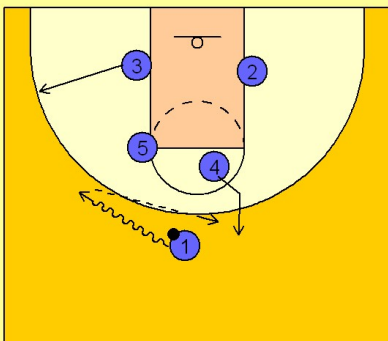
Set play (19)

1

Michigan State Set Play vs. Man

Box set to begin.

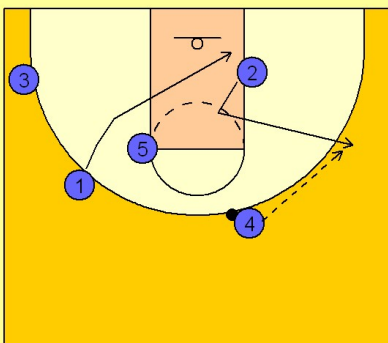
#1 drives to a side. #3 steps to the wing area as #1 drives at him. The opposite high post player #4 steps out and receives an entry pass from #1.



2

Michigan State Set Play vs. Man

#4 passes to #2 who breaks out to the ball side wing. #1 cuts to the ball side block.

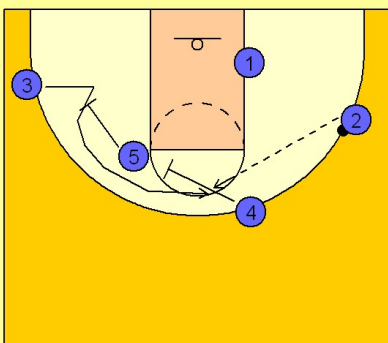


3

Michigan State Set Play vs. Man

After #4 reverses passes to the ball to #2, #4 and #5 set a staggered double screen for #3.

#2 can hit #3 for the shot on top. We will show you what they will do if #3 receives the pass and then what they will do if he is not open.

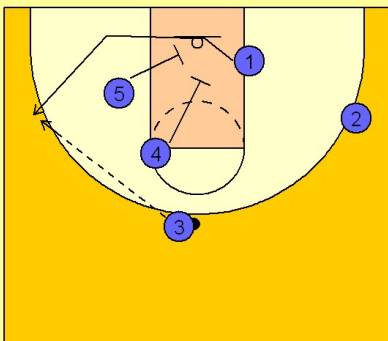


Michigan state

Set play (19)

4

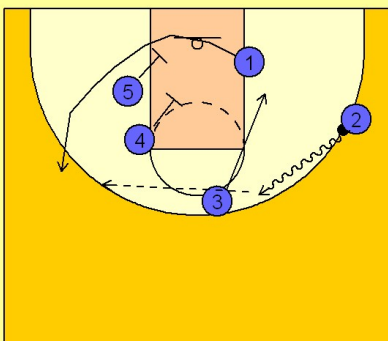
Michigan State Set Play vs. Man



If #3 receives the ball he looks for the shot if he is open. If he doesn't get the shot, #4 and #5 will set a double screen for #1 who breaks out to the wing off the double screen looking for the shot.

5

Michigan State Set Play vs. Man

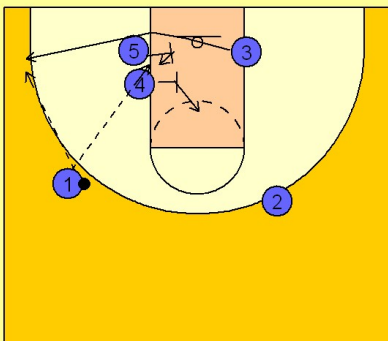


If #3 is not open or if he does not receive the pass, he cuts down to the ball side block. #2 takes the ball on the dribble to the top. #4 and #5 set a double screen for #1 breaking to the top for the shot.

#2 enters the ball to #1 for the shot.

6

Michigan State Set Play vs. Man



If #1 doesn't get the shot, #4 and #5 set another double screen for #3 trying to free him in the corner.