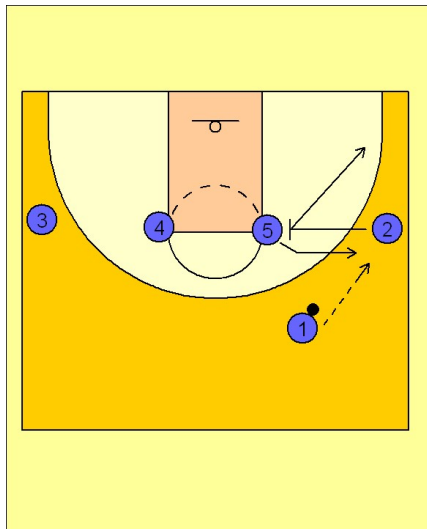


Michigan state

Set play (2)

1

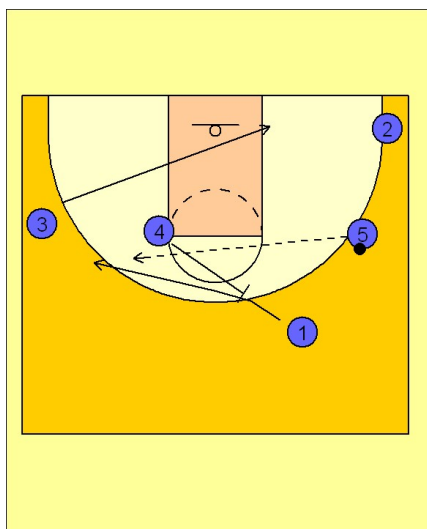
Michigan State Set Play



MSU likes to start a lot of their sets in a 1-4 high alignment. In this play, (#2) sets a screen for the post player (#5) so that they can enter the ball to the wing. Once (#2) screens he pops to the ball side corner.

2

Michigan State Set Play



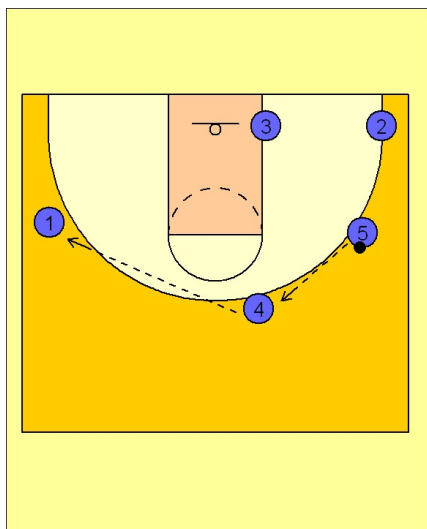
After (#1) enters the ball to the (#5) man, he receives a back screen from (#4).

(#1) fades to the opposite wing for a potential skip pass from (#5).

On the reverse pass to either (#1) or (#4), the (#3) man sprints to the opposite block.

3

Michigan State Set Play

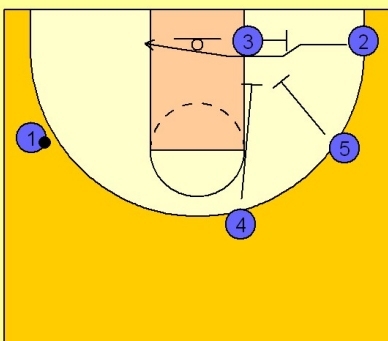


If the open skip pass is not there, (#5) hits the (#4) man stepping out after setting the back screen on (#1). (#4) then quickly reverses the ball to the (#1) man.

Michigan state Set play (2)

4

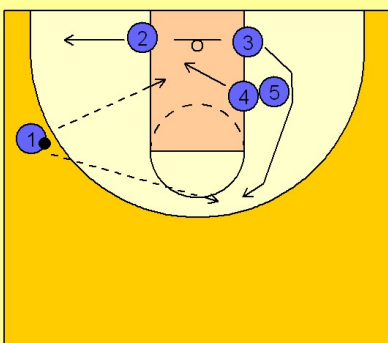
Michigan State Set Play



Once the ball is reversed to the (#1) man, (#3) steps out and sets a back screen for the (#2) man. (#4 and #5) begin their motion towards a double down screen on the (#3) defender. More "pick the picker" action.

5

Michigan State Set Play

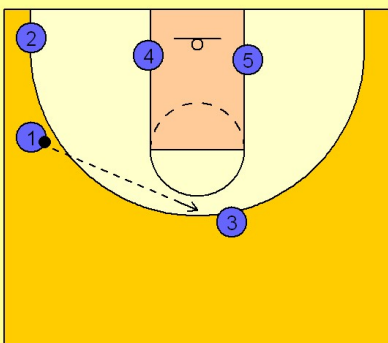


The (#2) man clears out of the lane on his initial cut if he didn't receive the ball for a layup.

(#3) comes off of the double screen looking for the jump shot at the top of the key area. After the double screen by (#4 and #5), both post players establish post position on their respective sides.

6

Michigan State Set Play



They are now in their 3 out 2 in alignment and can begin their motion offense.