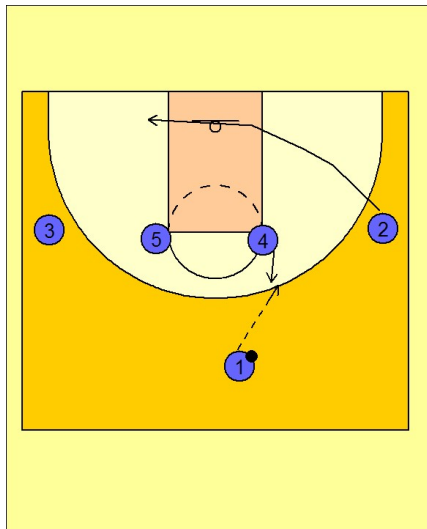


# Michigan state

## Set play (20)

1

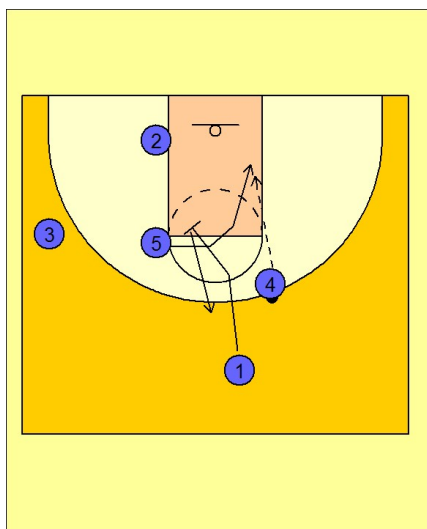


Michigan State Set Play vs. Man

1 - 4 set to begin.

#4 steps out and receives the entry pass from #1. As #4 catches the ball, #2 clears out to the opposite low block area.

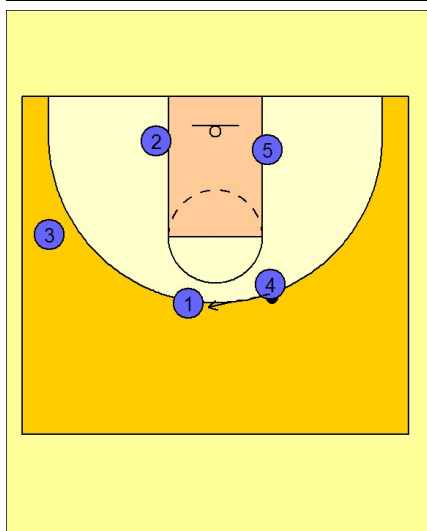
2



Michigan State Set Play vs. Man

As #2 clears out, #1 cuts into the lane and sets a screen for #5 to cut over the top looking for a quick hitting entry pass from #4. After screening, #1 pops out to the top of the key.

3



Michigan State Set Play vs. Man

If #5 is not open, #4 reverses the ball to #1 on top.

# Michigan state

## Set play (20)

4

Michigan State Set Play vs. Man

Once #1 has the ball, #3 uses staggered screens along the baseline from #2, #5 and #4. #1 looks to hit #3 for an open jumper on the right side of the floor.

