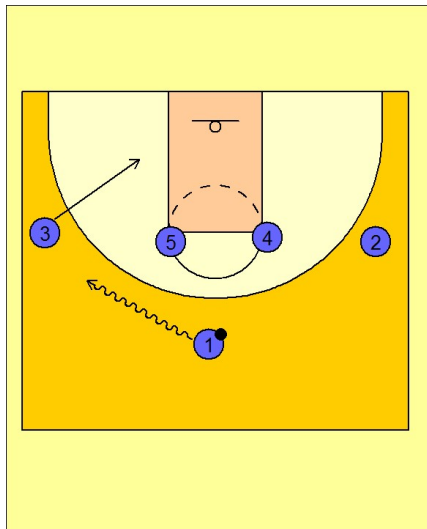


Michigan state

Set play (21)

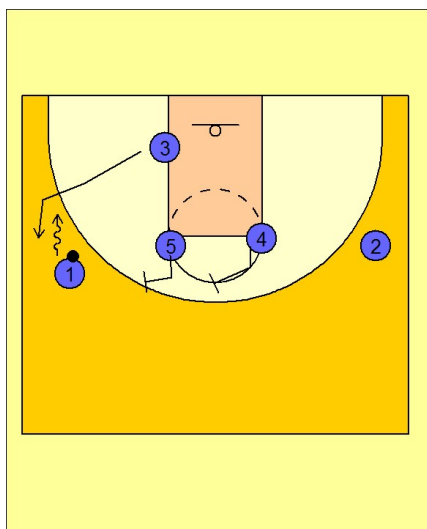
1



Michigan State Set Play vs. Man

#1 drives the ball at #3 on the left wing.

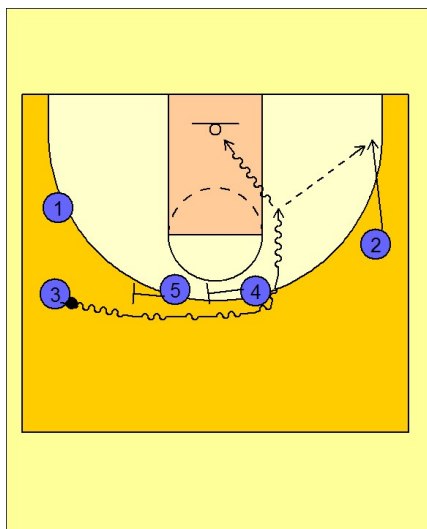
2



Michigan State Set Play vs. Man

As #1 reaches the left wing area, #3 breaks up to receive a dribble hand-off from #1 while #4 and #5 set up for a double staggered screen on top.

3



Michigan State Set Play vs. Man

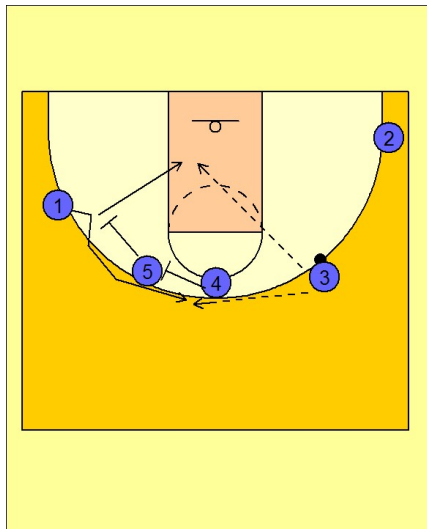
#3 takes the ball from #1 and uses the double staggered ball screen on top from #4 and #5 looking to turn the corner and score or drive and kick out to #2 if available.

Michigan state

Set play (21)

4

Michigan State Set Play vs. Man



If the drive and kick or direct drive to score is not available for #3 coming off the double ball screen on top, he will then look for #1 using a double staggered screen from #4 and #5. #1 can come off high or low off the double screen.