

Michigan state

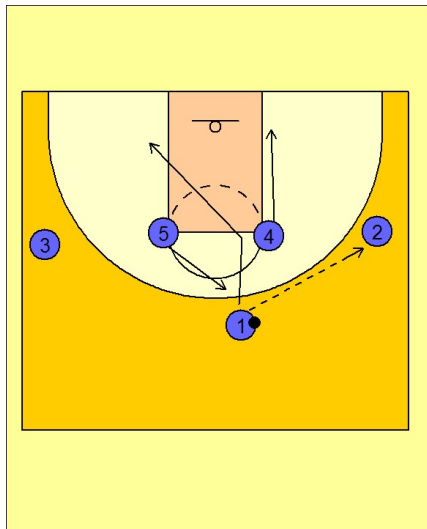
Set play (22)

1

Michigan State Set Play vs. Man

1 - 4 set to begin.

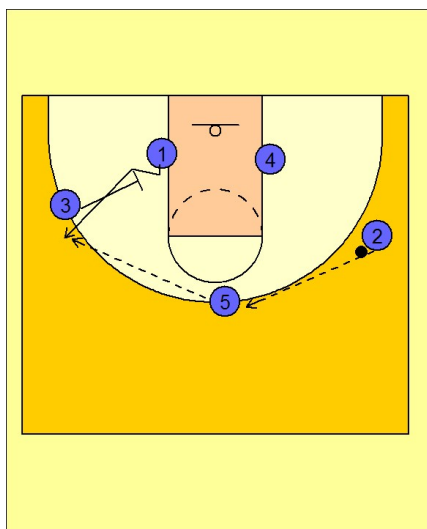
#1 enters the ball to #2 on the right wing. #4 slides down to the ball side low block while #5 breaks up to the top for ball reversal. #1, after passing to #2 on the right wing, cuts through the lane to the opposite low block area.



2

Michigan State Set Play vs. Man

#2 reverses the ball to #5 on top. While this pass is in flight to #5 on top, #3 is down screening for #1. #5 looks to reverse the ball to #1 on the left wing.



3

Michigan State Set Play vs. Man

As #1 catches the ball on the left wing, #3 screens across for #4 bringing him to the ball side low block area. As #3 screens across, #5 creates the "pick the picker" action by down screening for #3. #3 breaks up to the top looking for the open perimeter jump shot.

